

FAM50A RABBIT MAB

货号: N262207

产品全名: FAM50A 兔单克隆抗体

基因符号 family with sequence similarity 50 member A; 9F; XAP5;
HXC26; HXC-26; DXS9928E

UNIPROT ID: Q14320

背景: May be a DNA-binding protein or transcriptional factor.

抗原: A synthetic peptide of human FAM50A

经过测试的应用: WB,IHC-F,IHC-P,ICC/IF,IP

推荐稀释比: WB: 1/500-1/1000 IHC: 1/50-1/100 IF: 1/50-1/200 IP: 1/20

种属反应性: Rabbit

克隆性: Rabbit Monoclonal

克隆编号: R08-2G7

分子量: Calculated MW: 40 kDa; Observed MW: 40 kDa

亚型: IgG

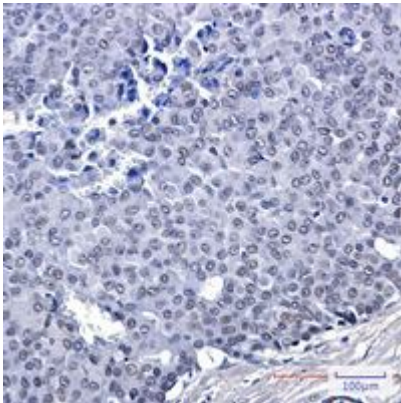
纯化: Affinity Purified

种属反应性: Human, Mouse and Rat,Hamster

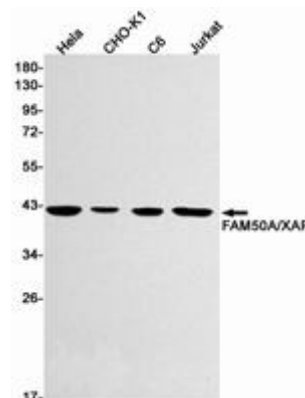
成分: PBS (without Mg²⁺ and Ca²⁺), pH 7.3 containing 50% glycerol,
0.5% BSA and 0.02% sodium azide

研究领域: Cell Biology

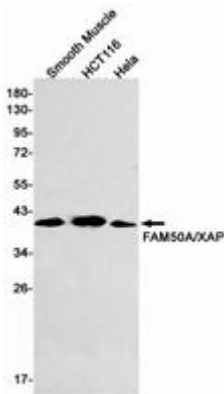
储存和运输: Store at -20°C. Avoid repeated freezing and thawing



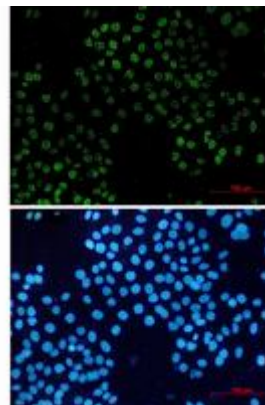
Immunohistochemistry analysis of paraffin-embedded Human breast cancer using FAM50A antibody. High-pressure and temperature Sodium Citrate pH 6.0 was used for antigen retrieval.



Western blot analysis of FAM50A/XAP in HeLa, CHO-K1, C6, Jurkat lysates using FAM50A antibody.



Western blot analysis of FAM50A/XAP in Smooth Muscle, HCT116, HeLa lysates using FAM50A/XAP antibody.



Immunocytochemistry analysis of FAM50A (green) in HeLa using FAM50A antibody, and DAPI (blue).