

FAM3D RABBIT PAB

货号: S218189

产品全名: FAM3D 兔多抗

基因符号: EF7; OIT1

UNIPROT ID: Q96BQ1 (Gene Accession - BC015359)

背景: FAM3D, also known as EF-7, belongs to the novel cytokine-like family whose members are secreted four-helix bundle proteins. Human FAM3D is abundantly expressed in placenta as a 224 amino acid (aa) residue precursor with a 25 aa signal sequence. The function of this protein remains unknown.

抗原: Fusion protein of human FAM3D

经过测试的应用: ELISA, WB, IHC

推荐稀释比: IHC: 100-200;WB: 500-2000;ELISA: 5000-10000

种属反应性: Rabbit

克隆性: Rabbit Polyclonal

亚型: Immunogen-specific rabbit IgG

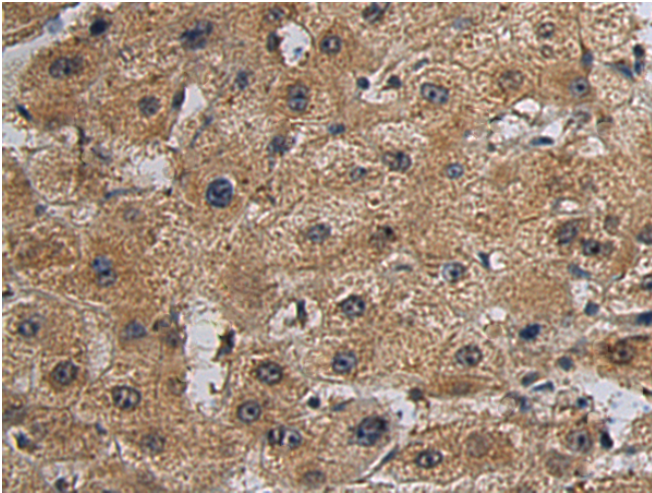
纯化: Antigen affinity purification

种属反应性: Human

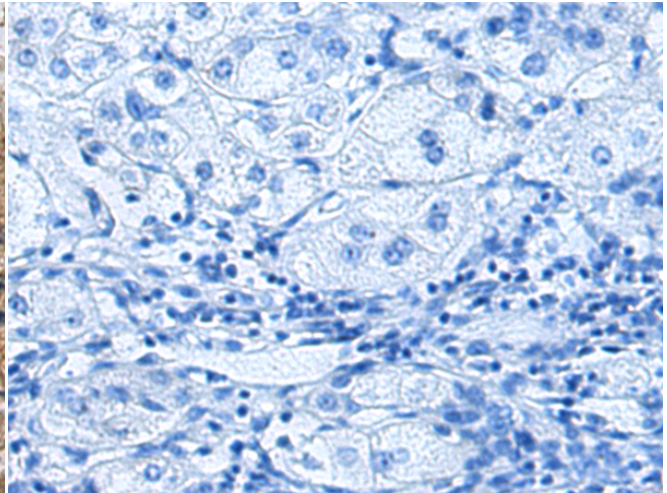
成分: PBS (without Mg²⁺ and Ca²⁺), pH 7.4, 150 mM NaCl, 0.05% Sodium Azide and 40% glycerol

研究领域: Immunology

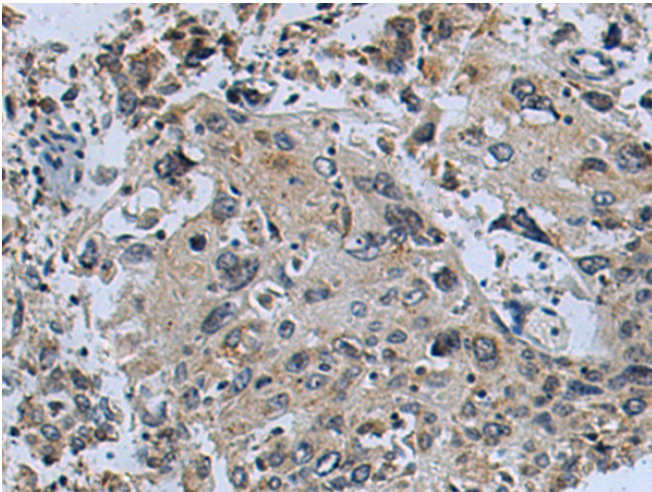
储存和运输: Store at -20°C. Avoid repeated freezing and thawing



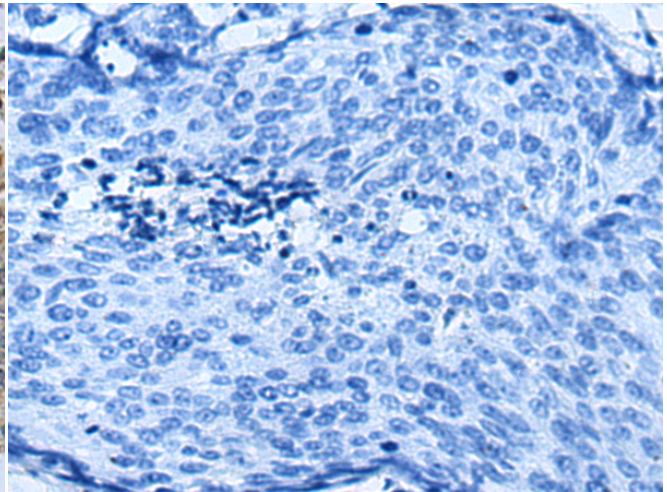
Immunohistochemistry analysis of paraffin embedded Human liver cancer tissue using 218189(FAM3D Antibody) at a dilution of 1/110 (Secreted).



In comparison with the IHC on the left, the same paraffin-embedded Human liver cancer tissue is first treated with the fusion protein and then with 218189(Anti-FAM3D Antibody) at dilution 1/110.

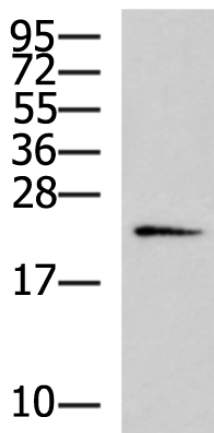


The image on the left is immunohistochemistry of paraffin-embedded Human cervical cancer tissue using 218189(Anti-FAM3D Antibody) at a dilution of 1/110.



In comparison with the IHC on the left, the same paraffin-embedded Human cervical cancer tissue is first treated with fusion protein and then with D223906(Anti-FAM3D Antibody) at dilution 1/110.

kDa



Gel: 12%SDS-PAGE, Lysate: 40 µg;
 Lane: HT-29 cell lysate;
 Primary antibody: 218189(FAM3D Antibody) at dilution 1/800;
 Secondary antibody: HRP-conjugated Goat anti rabbit IgG at 1/5000 dilution;
 Exposure time: 2 minutes



Product Description

Pioneering GTPase and Oncogene Product Development since 2010
