

FAM234A RABBIT PAB

货号: S221644

产品全名: FAM234A 兔多抗

基因符号: gsl9; ITFG3; C16orf9

UNIPROT ID: Q9H0X4 (Gene Accession - NP_114428)

背景: FAM234A, also known as ITFG3, which is a 552 amino acid single-pass transmembrane protein that contains FG-GAP repeats, a motif commonly found in Integrin proteins. There are two isoforms of ITFG3 that are produced as a result of alternative splicing events.

抗原: Synthetic peptide of human FAM234A

经过测试的应用: ELISA, WB, IHC

推荐稀释比: IHC: 20-100;WB: 200-1000;ELISA: 5000-10000

种属反应性: Rabbit

克隆性: Rabbit Polyclonal

亚型: Immunogen-specific rabbit IgG

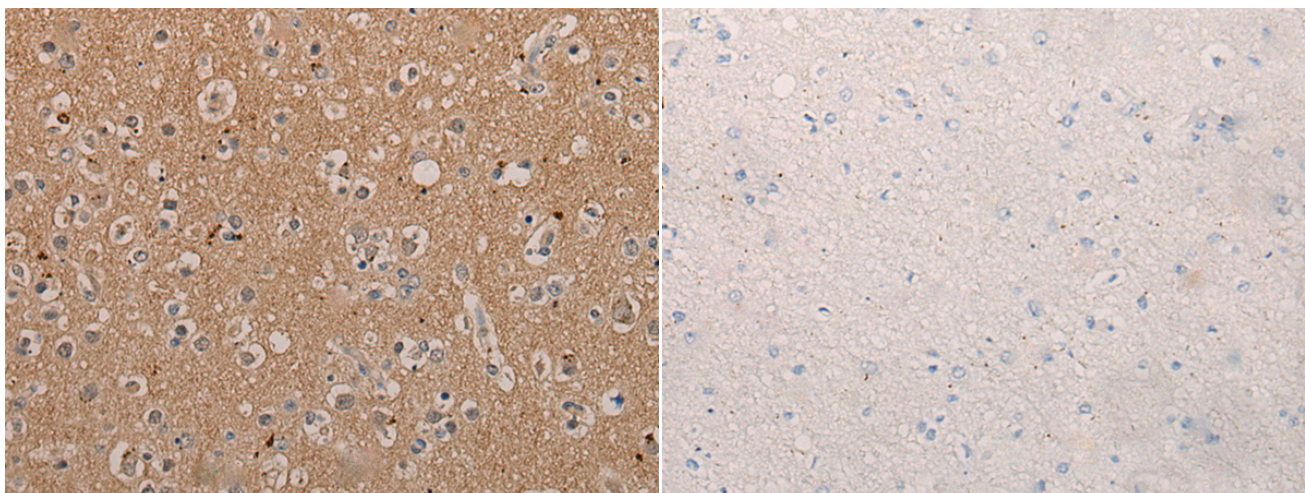
纯化: Antigen affinity purification

种属反应性: Human, Mouse, Rat

成分: PBS (without Mg²⁺ and Ca²⁺), pH 7.4, 150 mM NaCl, 0.05% Sodium Azide and 40% glycerol

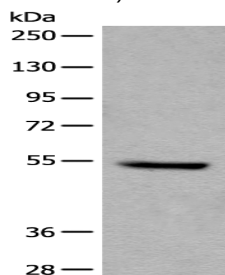
研究领域: Cell Biology

储存和运输: Store at -20°C. Avoid repeated freezing and thawing



Immunohistochemistry analysis of paraffin embedded Human brain tissue using 221644(FAM234A Antibody) at a dilution of 1/25(Cell membrane).

In comparison with the IHC on the left, the same paraffin-embedded Human brain tissue is first treated with the synthetic peptide and then with 221644(Anti-FAM234A Antibody) at dilution 1/25.



Gel: 8%SDS-PAGE, Lysate: 40 µg;

Lane: Rat brain tissue lysate;

Primary antibody: 221644(FAM234A Antibody) at dilution 1/200;

Secondary antibody: Goat anti rabbit IgG at 1/8000 dilution;

Exposure time: 6 minutes