

FAM200A RABBIT PAB

货号: S222009

产品全名: FAM200A 兔多抗

基因符号: C7orf38

UNIPROT ID: Q8TCP9 (Gene Accession - NP_659802)

背景: This gene encodes a protein of unknown function. The protein is weakly similar to transposase-like proteins in human and mouse.

抗原: Synthetic peptide of human FAM200A

经过测试的应用: ELISA, IHC

推荐稀释比: IHC: 40-200; ELISA: 5000-10000

种属反应性: Rabbit

克隆性: Rabbit Polyclonal

亚型: Immunogen-specific rabbit IgG

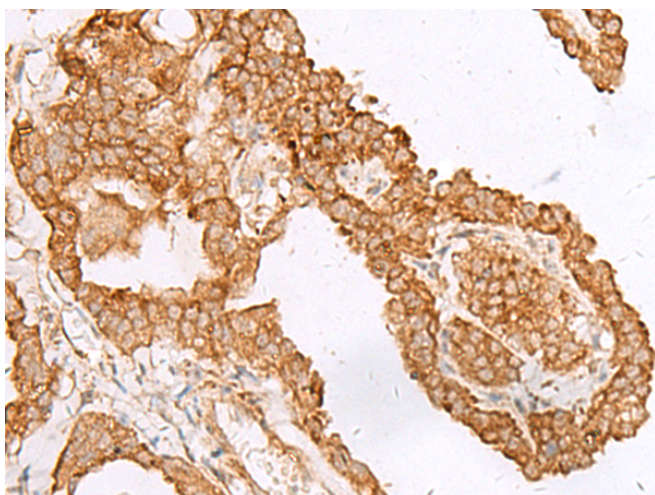
纯化: Antigen affinity purification

种属反应性: Human

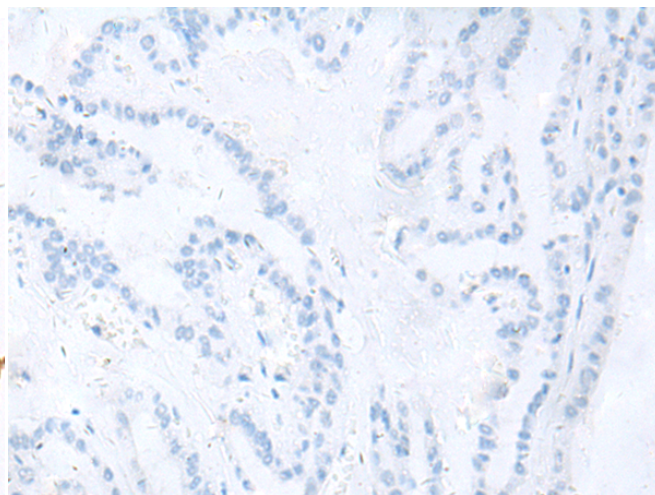
成分: PBS (without Mg²⁺ and Ca²⁺), pH 7.4, 150 mM NaCl, 0.05% Sodium Azide and 40% glycerol

研究领域: Cell Biology

储存和运输: Store at -20°C. Avoid repeated freezing and thawing



Immunohistochemistry analysis of paraffin embedded Human thyroid cancer tissue using 222009(FAM200A Antibody) at a dilution of 1/45(Cytoplasm and Nucleus).



In comparison with the IHC on the left, the same paraffin-embedded Human thyroid cancer tissue is first treated with the synthetic peptide and then with 222009(Anti-FAM200A Antibody) at dilution 1/45.