

## FAM177B RABBIT PAB

货号: S222007

产品全名: FAM177B 兔多抗

基因符号

**UNIPROT ID:** A6PVY3 (Gene Accession - NP\_997351)

背景: The function of this protein remains unknown.

抗原: Synthetic peptide of human FAM177B

经过测试的应用: ELISA, IHC

推荐稀释比: IHC: 50-200; ELISA: 5000-10000

种属反应性: Rabbit

克隆性: Rabbit Polyclonal

亚型: Immunogen-specific rabbit IgG

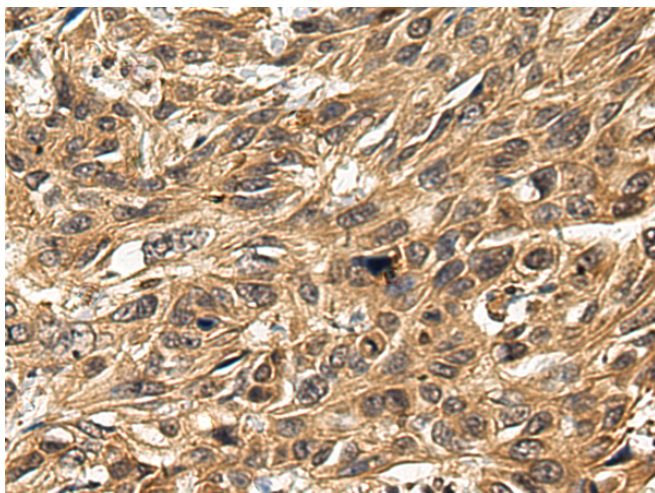
纯化: Antigen affinity purification

种属反应性: Human

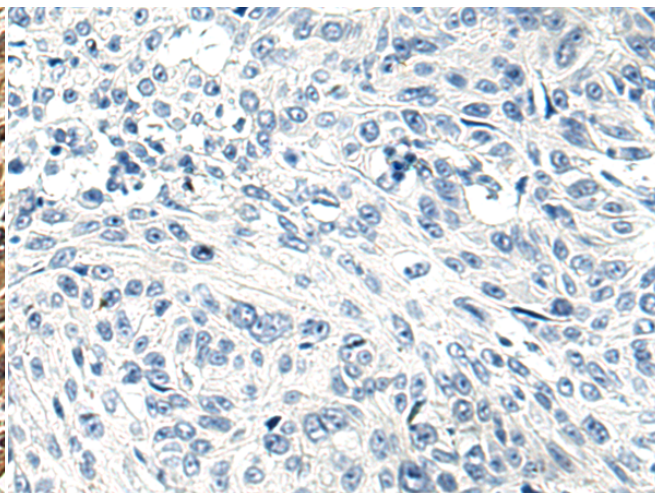
成分: PBS (without Mg<sup>2+</sup> and Ca<sup>2+</sup>), pH 7.4, 150 mM NaCl, 0.05% Sodium Azide and 40% glycerol

研究领域: Cell Biology

储存和运输: Store at -20°C. Avoid repeated freezing and thawing



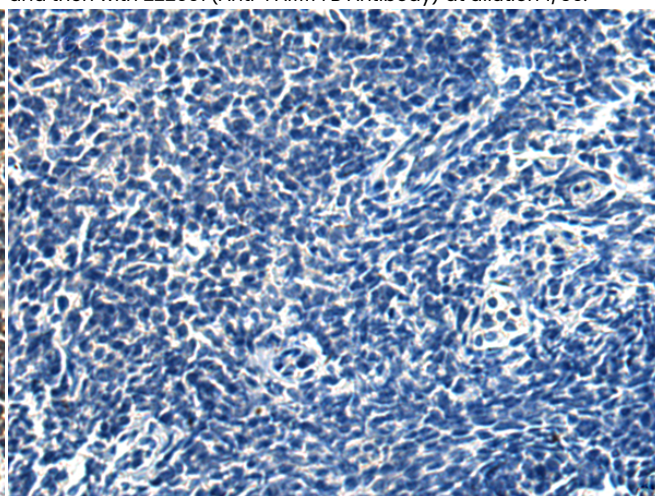
Immunohistochemistry analysis of paraffin embedded Human esophagus cancer using 222007(FAM177B Antibody) at a dilution of 1/50(Cytoplasm).



In comparison with the IHC on the left, the same paraffin-embedded Human esophagus cancer is first treated with the synthetic peptide and then with 222007(Anti-FAM177B Antibody) at dilution 1/50.



The image on the left is immunohistochemistry of paraffin-embedded Human tonsil using 222007(Anti-FAM177B Antibody) at a dilution of 1/50.



In comparison with the IHC on the left, the same paraffin-embedded Human tonsil is first treated with synthetic peptide and then with D263875(Anti-FAM177B Antibody) at dilution 1/50.



# Product Description

Pioneering GTPase and Oncogene Product Development since 2010

---