

FAM110B RABBIT PAB

货号: S218416

产品全名: FAM110B 兔多抗

基因符号: C8orf72

UNIPROT ID: Q8TC76 (Gene Accession - BC024294)

背景: FAM110B (Familiarity with sequence similarity 110, member B) is a 370 amino acid protein, which contains several motifs that are conserved among FAM110 family members and a proline-rich region through which it probably binds proteins. Localized to the nucleus where they associate with centrosomes, FAM110A, FAM110B and FAM110C accumulate at the spindle poles during mitosis. Expression of FAM110B and FAM110C impairs cell cycle progression through G1 phase. FAM110B is expressed in testis, thyroid and spleen and is found at lower levels in ovary, adrenal gland, stomach, trachea, intestine, lymph node, spinal cord and prostate. The gene encoding FAM110B maps to human chromosome 8, which is made up of nearly 146 million bases and encodes about 800 genes. Chromosome 8 is also associated with Pfeiffer syndrome, congenital hypothyroidism and Waardenburg syndrome. May be involved in tumor progression.

抗原: Fusion protein of human FAM110B

经过测试的应用: ELISA, IHC

推荐稀释比: IHC: 40-200; ELISA: 5000-10000

种属反应性: Rabbit

克隆性: Rabbit Polyclonal

亚型: Immunogen-specific rabbit IgG

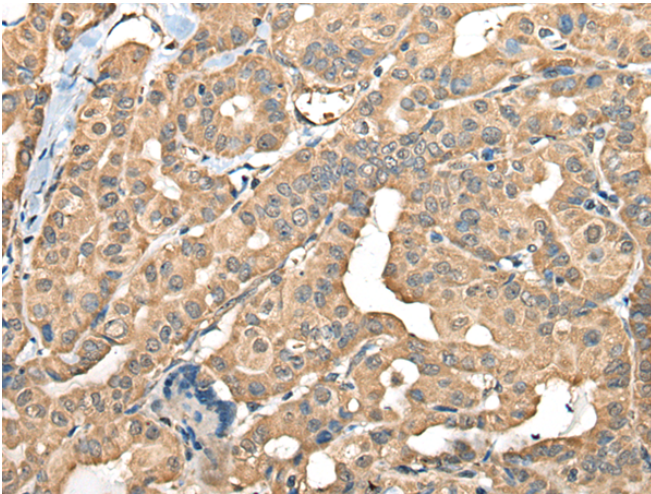
纯化: Antigen affinity purification

种属反应性: Human, Mouse, Rat

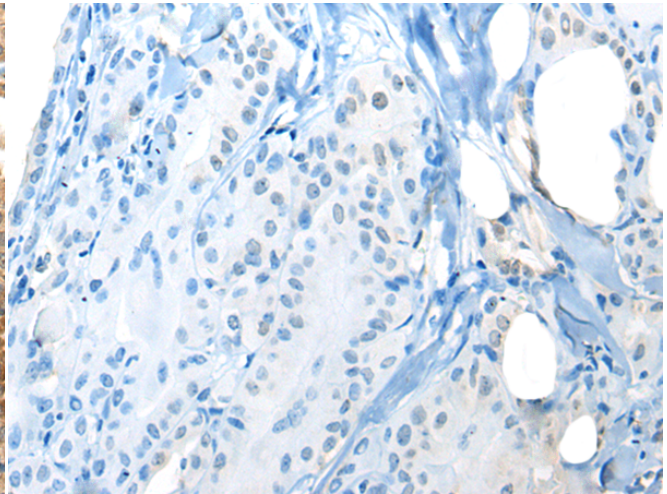
成分: PBS (without Mg²⁺ and Ca²⁺), pH 7.4, 150 mM NaCl, 0.05% Sodium Azide and 40% glycerol

研究领域: Cancer

储存和运输: Store at -20°C. Avoid repeated freezing and thawing



Immunohistochemistry analysis of paraffin embedded Human thyroid cancer tissue using 218416 (FAM110B Antibody) at a dilution of 1/40 (Cytoplasm).



In comparison with the IHC on the left, the same paraffin-embedded Human thyroid cancer tissue is first treated with the fusion protein and then with 218416 (Anti-FAM110B Antibody) at dilution 1/40.