

## FABP3 RABBIT PAB

货号: S221417

产品全名: FABP3 兔多抗

基因符号 MDG1; FABP11; H-FABP; M-FABP; O-FABP

**UNIPROT ID:** P05413 (Gene Accession - NP\_004093)

**背景:** The intracellular fatty acid-binding proteins (FABPs) belongs to a multigene family. FABPs are divided into at least three distinct types, namely the hepatic-, intestinal- and cardiac-type. They form 14-15 kDa proteins and are thought to participate in the uptake, intracellular metabolism and/or transport of long-chain fatty acids. They may also be responsible in the modulation of cell growth and proliferation. Fatty acid-binding protein 3 gene contains four exons and its function is to arrest growth of mammary epithelial cells. This gene is a candidate tumor suppressor gene for human breast cancer.

**抗原:** Synthetic peptide of human FABP3

**经过测试的应用:** ELISA, WB, IHC

**推荐稀释比:** IHC: 25-100;WB: 200-1000;ELISA: 5000-10000

**种属反应性:** Rabbit

**克隆性:** Rabbit Polyclonal

**亚型:** Immunogen-specific rabbit IgG

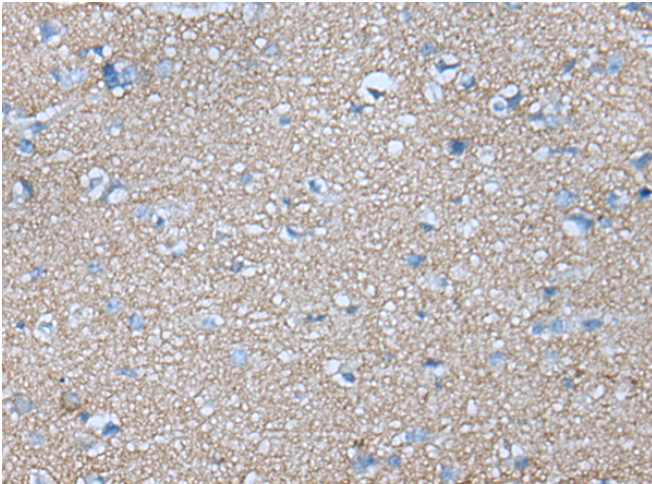
**纯化:** Antigen affinity purification

**种属反应性:** Human, Mouse, Rat

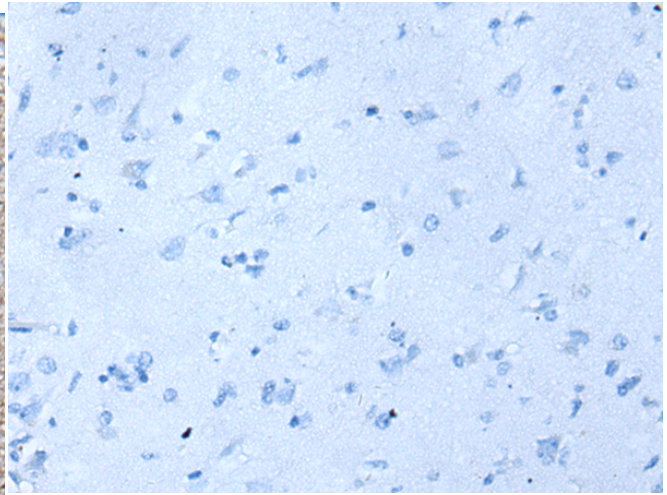
**成分:** PBS (without Mg<sup>2+</sup> and Ca<sup>2+</sup>), pH 7.4, 150 mM NaCl, 0.05% Sodium Azide and 40% glycerol

**研究领域:** Metabolism, Cardiovascular, Stem Cells

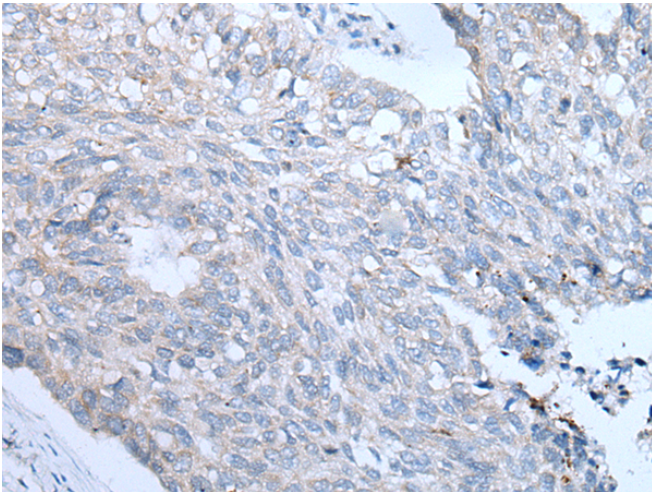
**储存和运输:** Store at -20°C. Avoid repeated freezing and thawing



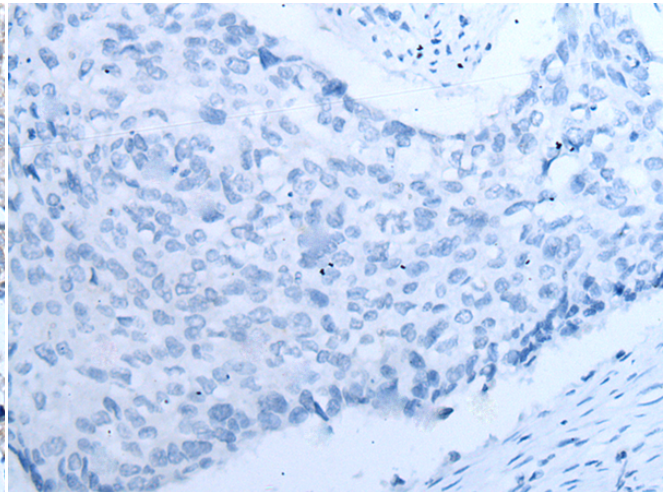
Immunohistochemistry analysis of paraffin embedded Human brain tissue using 221417(FABP3 Antibody) at a dilution of 1/35(Cytoplasm).



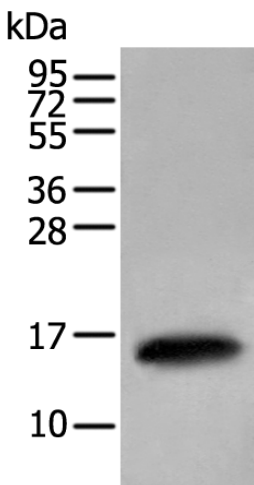
In comparison with the IHC on the left, the same paraffin-embedded Human brain tissue is first treated with the synthetic peptide and then with 221417(Anti-FABP3 Antibody) at dilution 1/35.



The image on the left is immunohistochemistry of paraffin-embedded Human lung cancer tissue using 221417(Anti-FABP3 Antibody) at a dilution of 1/35.



In comparison with the IHC on the left, the same paraffin-embedded Human lung cancer tissue is first treated with synthetic peptide and then with D262999(Anti-FABP3 Antibody) at dilution 1/35.



Gel: 12%SDS-PAGE, Lysate: 40 µg;  
Lane: Human heart tissue lysate;  
Primary antibody: 221417(FABP3 Antibody) at dilution 1/350;  
Secondary antibody: Goat anti rabbit IgG at 1/8000 dilution;  
Exposure time: 1 second



# Product Description

Pioneering GTPase and Oncogene Product Development since 2010

---