

## F5(COAGULATION FACTOR V LIGHT CHAIN) RABBIT PAB

货号: S222001

产品全名: F5(Coagulation factor V light chain) 兔多抗

基因符号: FVL; PCCF; THPH2; RPRGL1

**UNIPROT ID:** P12259 (Gene Accession - NP\_000121)

**背景:** This gene encodes an essential cofactor of the blood coagulation cascade. This factor circulates in plasma, and is converted to the active form by the release of the activation peptide by thrombin during coagulation. This generates a heavy chain and a light chain which are held together by calcium ions. The activated protein is a cofactor that participates with activated coagulation factor X to activate prothrombin to thrombin. Defects in this gene result in either an autosomal recessive hemorrhagic diathesis or an autosomal dominant form of thrombophilia, which is known as activated protein C resistance.

**抗原:** Synthetic peptide of human F5(Coagulation factor V light chain)

**经过测试的应用:** ELISA, IHC

**推荐稀释比:** IHC: 20-100; ELISA: 5000-10000

**种属反应性:** Rabbit

**克隆性:** Rabbit Polyclonal

**亚型:** Immunogen-specific rabbit IgG

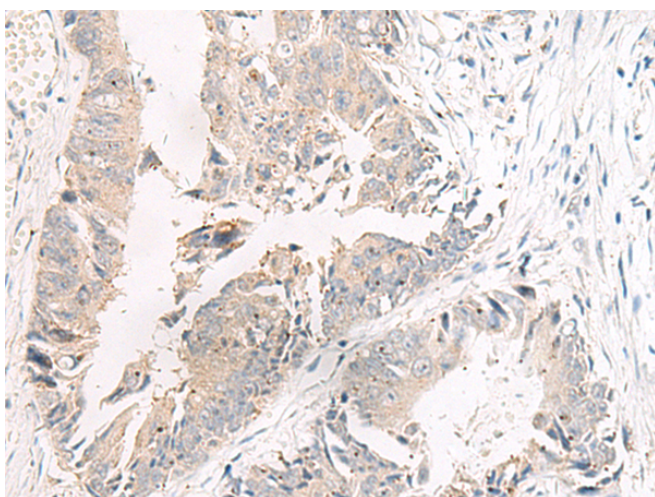
**纯化:** Antigen affinity purification

**种属反应性:** Human, Mouse, Rat

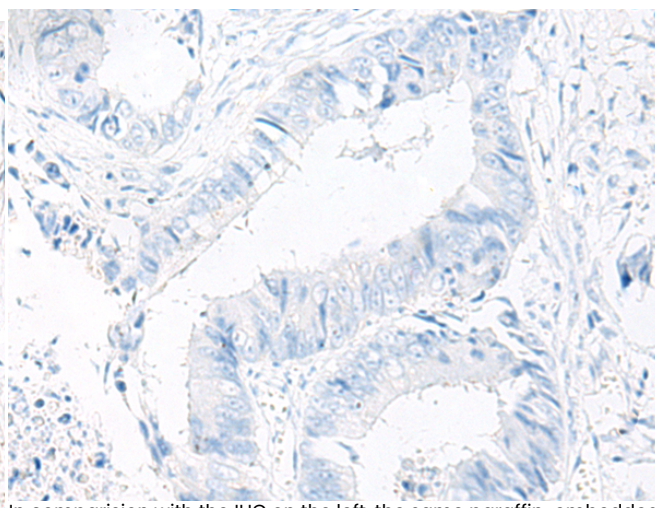
**成分:** PBS (without Mg<sup>2+</sup> and Ca<sup>2+</sup>), pH 7.4, 150 mM NaCl, 0.05% Sodium Azide and 40% glycerol

**研究领域:** Cardiovascular

**储存和运输:** Store at -20°C. Avoid repeated freezing and thawing



Immunohistochemistry analysis of paraffin embedded Human colorectal cancer tissue using 222001(F5(Coagulation factor V light chain) Antibody) at a dilution of 1/20 (Secreted).



In comparison with the IHC on the left, the same paraffin-embedded Human colorectal cancer tissue is first treated with the synthetic peptide and then with 222001(Anti-F5(Anti-Coagulation factor V light chain) Antibody) at dilution 1/20.