

## F2 RABBIT PAB

货号: S221011

产品全名: F2 兔多抗

基因符号: PT; THPH1; RPRGL2

**UNIPROT ID:** P00734 (Gene Accession - NP\_000497)

**背景:** Coagulation factor II is proteolytically cleaved to form thrombin in the first step of the coagulation cascade which ultimately results in the stemming of blood loss. F2 also plays a role in maintaining vascular integrity during development and postnatal life. Finally, peptides derived from the C-terminus of this protein have antimicrobial activity against *E. coli* and *P. aeruginosa*. Mutations in F2 leads to various forms of thrombosis and dysprothrombinemia.

**抗原:** Synthetic peptide of human F2

**经过测试的应用:** ELISA, IHC

**推荐稀释比:** IHC: 25-100; ELISA: 2000-5000

**种属反应性:** Rabbit

**克隆性:** Rabbit Polyclonal

**亚型:** Immunogen-specific rabbit IgG

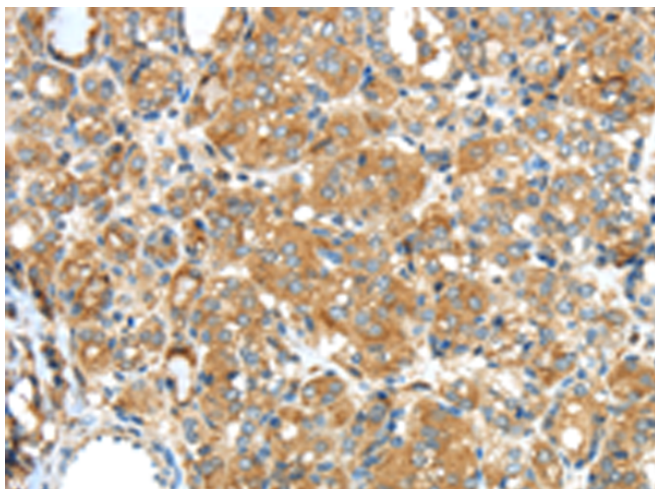
**纯化:** Antigen affinity purification

**种属反应性:** Human, Mouse, Rat

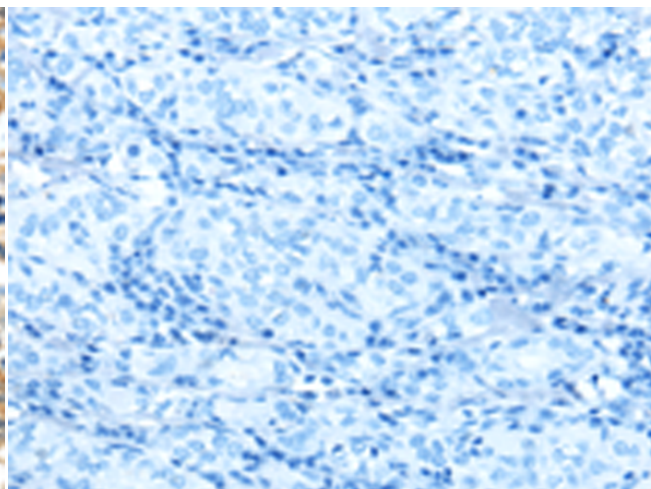
**成分:** PBS (without Mg<sup>2+</sup> and Ca<sup>2+</sup>), pH 7.4, 150 mM NaCl, 0.05% Sodium Azide and 40% glycerol

**研究领域:** Cardiovascular

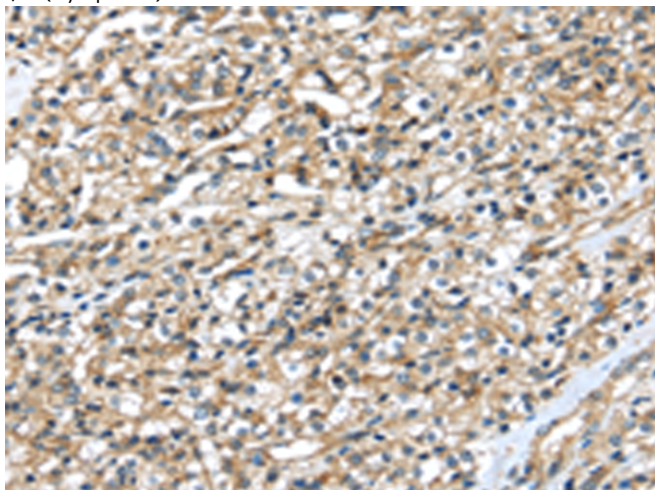
**储存和运输:** Store at -20°C. Avoid repeated freezing and thawing



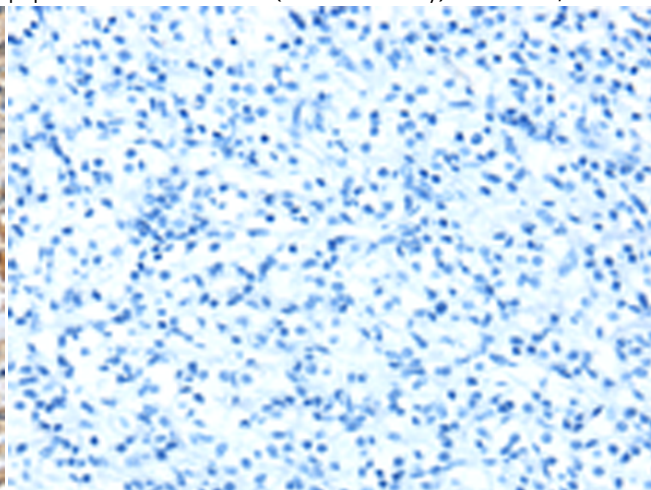
Immunohistochemistry analysis of paraffin embedded Human thyroid cancer tissue using 221011(F2 Antibody) at a dilution of 1/35(Cytoplasm).



In comparison with the IHC on the left, the same paraffin-embedded Human thyroid cancer tissue is first treated with the synthetic peptide and then with 221011(Anti-F2 Antibody) at dilution 1/35.



The image on the left is immunohistochemistry of paraffin-embedded Human prostate cancer tissue using 221011(Anti-F2 Antibody) at a dilution of 1/35.



In comparison with the IHC on the left, the same paraffin-embedded Human prostate cancer tissue is first treated with synthetic peptide and then with D262357(Anti-F2 Antibody) at dilution 1/35.



# Product Description

Pioneering GTPase and Oncogene Product Development since 2010

---