

## EXTRACELLULAR MATRIX PROTEIN 1 RABBIT MAB

货号: N262198

产品全名: Extracellular Matrix Protein 1 兔单克隆抗体

基因符号 ECM1; Extracellular matrix protein 1; Secretory component p85

**UNIPROT ID:** Q16610

背景: Involved in endochondral bone formation as negative regulator of bone mineralization. Stimulates the proliferation of endothelial cells and promotes angiogenesis. Inhibits MMP9 proteolytic activity.

抗原: A synthetic peptide of human Extracellular matrix protein 1

经过测试的应用: WB,IHC-F,IHC-P,ICC/IF,IP

推荐稀释比: WB: 1/500-1/1000 IHC: 1/50-1/100 IF: 1/50-1/200 IP: 1/20

种属反应性: Rabbit

克隆性: Rabbit Monoclonal

克隆编号: R07-7E8

分子量: Calculated MW: 61 kDa; Observed MW: 61 kDa

亚型: IgG

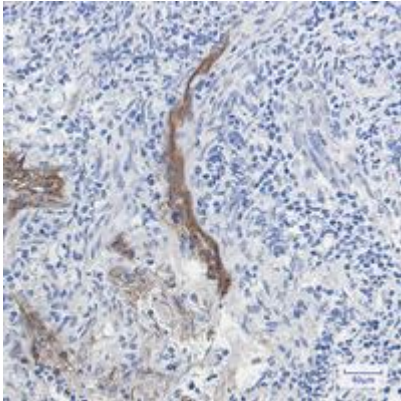
纯化: Affinity Purified

种属反应性: Human

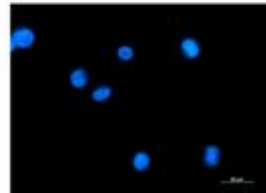
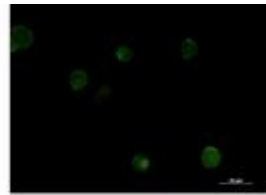
成分: PBS (without Mg<sup>2+</sup> and Ca<sup>2+</sup>), pH 7.3 containing 50% glycerol, 0.5% BSA and 0.02% sodium azide

研究领域: Immunology

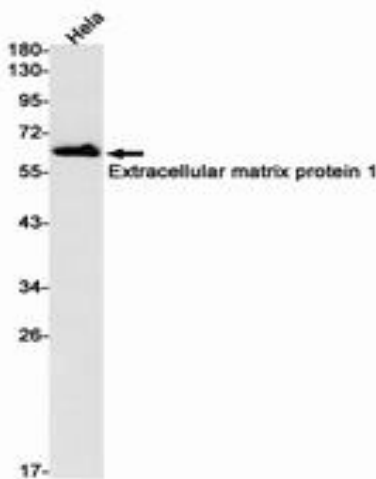
储存和运输: Store at -20°C. Avoid repeated freezing and thawing



Immunohistochemistry analysis of paraffin-embedded Human tonsil using Extracellular matrix protein 1 antibody. High-pressure and temperature Sodium Citrate pH 6.0 was used for antigen retrieval.



Immunocytochemistry analysis of Extracellular Matrix Protein 1 (green) in K562 using Extracellular Matrix Protein 1 antibody, and DAPI (blue).



Western blot analysis of Extracellular matrix protein 1 in HeLa lysates using Extracellular matrix protein 1 antibody.