

EXOSC9 RABBIT PAB

货号: S221993

产品全名: EXOSC9 兔多抗

基因符号: p5; p6; RRP45; PMSCL1; Rrp45p; PM/Sci-75

UNIPROT ID: Q06265 (Gene Accession - NP_005024)

背景: This gene encodes a component of the human exosome, a exoribonuclease complex which processes and degrades RNA in the nucleus and cytoplasm. This component may play a role in mRNA degradation and the polymyositis/scleroderma autoantigen complex. Alternative splicing results in multiple transcript variants.

抗原: Synthetic peptide of human EXOSC9

经过测试的应用: ELISA, WB, IHC

推荐稀释比: IHC: 40-200;WB: 500-2000;ELISA: 5000-10000

种属反应性: Rabbit

克隆性: Rabbit Polyclonal

亚型: Immunogen-specific rabbit IgG

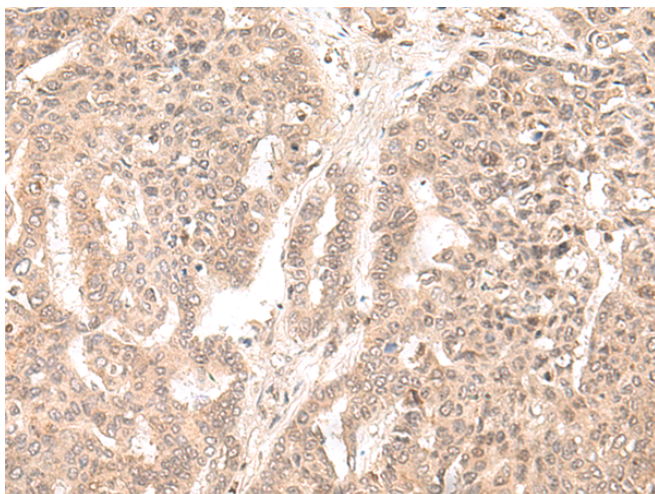
纯化: Antigen affinity purification

种属反应性: Human

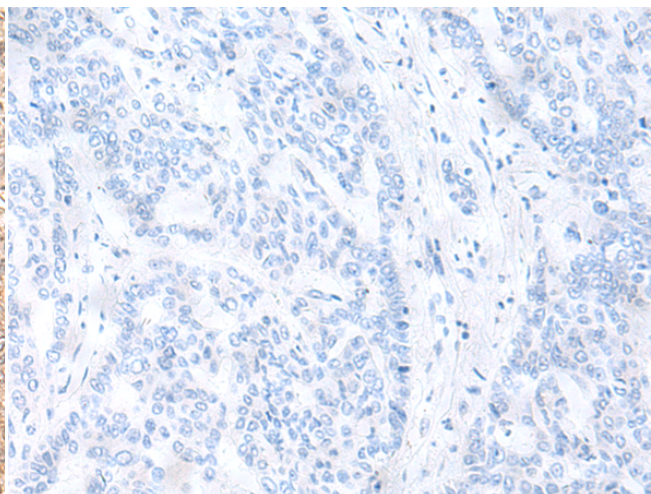
成分: PBS (without Mg²⁺ and Ca²⁺), pH 7.4, 150 mM NaCl, 0.05% Sodium Azide and 40% glycerol

研究领域: Epigenetics and Nuclear Signaling, Immunology

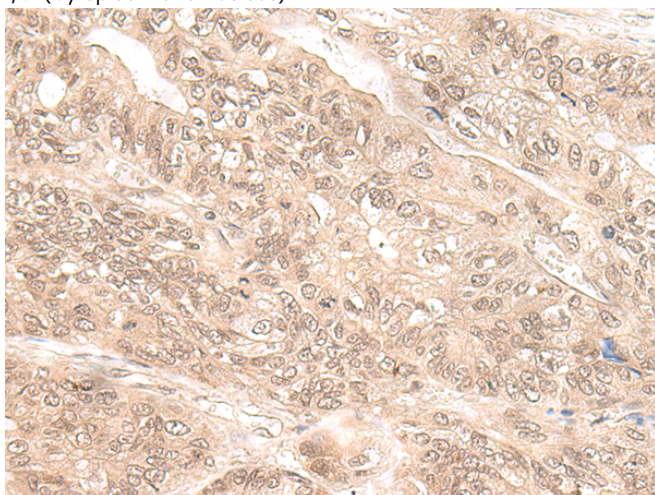
储存和运输: Store at -20°C. Avoid repeated freezing and thawing



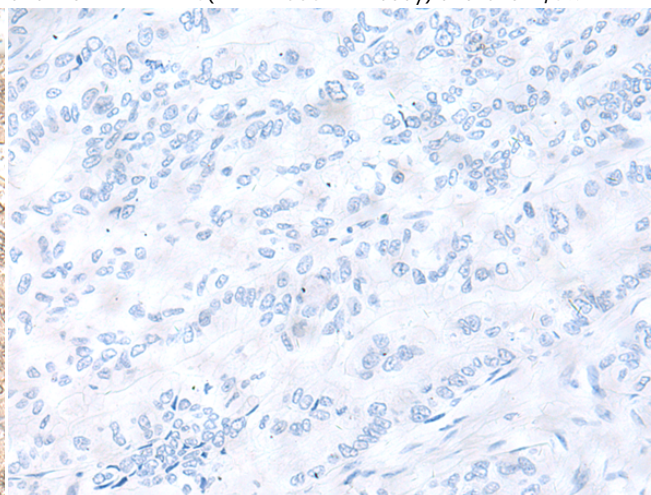
Immunohistochemistry analysis of paraffin embedded Human liver cancer tissue using 221993(EXOSC9 Antibody) at a dilution of 1/35(Cytoplasm and Nucleus).



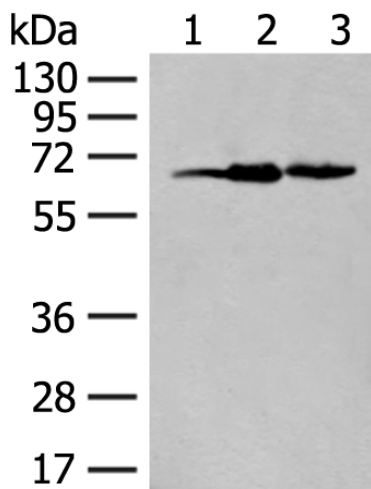
In comparison with the IHC on the left, the same paraffin-embedded Human liver cancer tissue is first treated with the synthetic peptide and then with 221993(Anti-EXOSC9 Antibody) at dilution 1/35.



The image on the left is immunohistochemistry of paraffin-embedded Human gastric cancer tissue using 221993(Anti-EXOSC9 Antibody) at a dilution of 1/35.



In comparison with the IHC on the left, the same paraffin-embedded Human gastric cancer tissue is first treated with synthetic peptide and then with D263848(Anti-EXOSC9 Antibody) at dilution 1/35.



Gel: 8%SDS-PAGE, Lysate: 40 µg;
Lane 1-3: Human heart tissue, HEPG2 and 293T cell lysates;
Primary antibody: 221993(EXOSC9 Antibody) at dilution 1/400;
Secondary antibody: Goat anti rabbit IgG at 1/8000 dilution;
Exposure time: 20 seconds



Product Description

Pioneering GTPase and Oncogene Product Development since 2010
