

EXOSC10 RABBIT PAB

货号: S219445

产品全名: EXOSC10 兔多抗

基因符号 p2; p3; p4; RRP6; PMSCL1; Rrp6p; PM-Scl; PMSCL2; PM/Scl-100

UNIPROT ID: Q01780 (Gene Accession - BC073788)

背景: Putative catalytic component of the RNA exosome complex which has 3'->5' exoribonuclease activity and participates in a multitude of cellular RNA processing and degradation events. In the nucleus, the RNA exosome complex is involved in proper maturation of stable RNA species such as rRNA, snRNA and snoRNA, in the elimination of RNA processing by-products and non-coding 'pervasive' transcripts, such as antisense RNA species and promoter-upstream transcripts (PROMPTs), and of mRNAs with processing defects, thereby limiting or excluding their export to the cytoplasm. The RNA exosome may be involved in Ig class switch recombination (CSR) and/or Ig variable region somatic hypermutation (SHM) by targeting AICDA deamination activity to transcribed dsDNA substrates. In the cytoplasm, the RNA exosome complex is involved in general mRNA turnover and specifically degrades inherently unstable mRNAs containing AU-rich elements (AREs) within their 3' untranslated regions, and in RNA surveillance pathways, preventing translation of aberrant mRNAs. It seems to be involved in degradation of histone mRNA. EXOSC10 has 3'-5' exonuclease activity (By similarity). EXOSC10 is required for nucleolar localization of CID and probably mediates the association of MTRF, CID and MPP6 with the RNA exosome involved in the maturation of 5.8S rRNA.

抗原: Fusion protein of human EXOSC10

经过测试的应用: ELISA, WB, IHC

推荐稀释比: IHC: 50-200;WB: 500-2000;ELISA: 5000-10000

种属反应性: Rabbit

克隆性: Rabbit Polyclonal

亚型: Immunogen-specific rabbit IgG

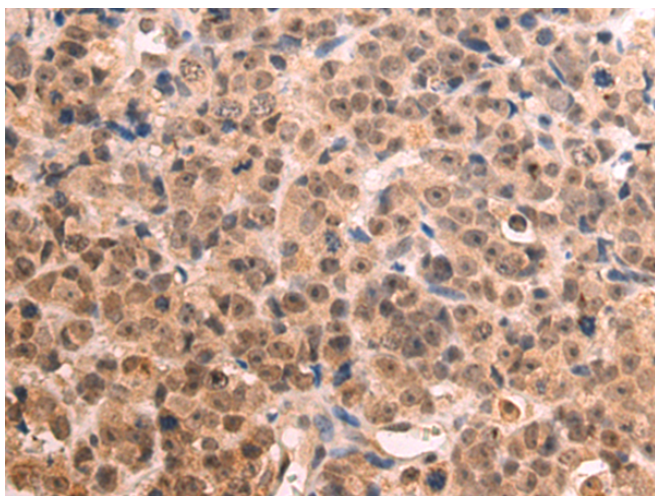
纯化: Antigen affinity purification

种属反应性: Human

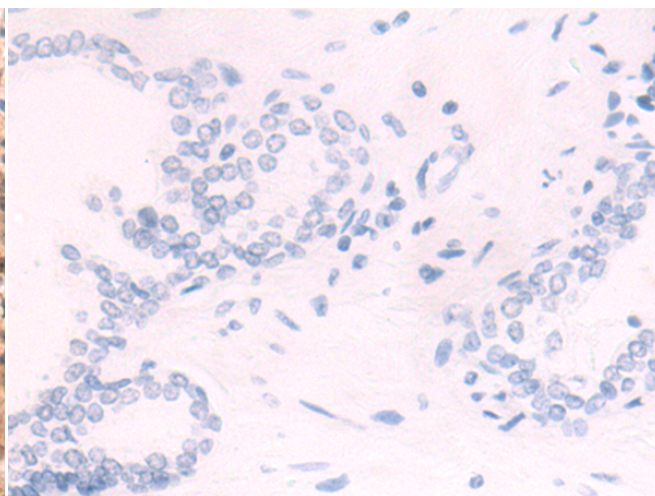
成分: PBS (without Mg²⁺ and Ca²⁺), pH 7.4, 150 mM NaCl, 0.05% Sodium Azide and 40% glycerol

研究领域: Immunology, Epigenetics and Nuclear Signaling

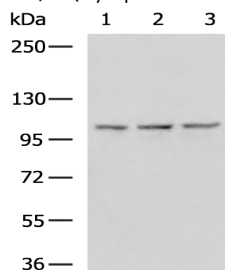
储存和运输: Store at -20°C. Avoid repeated freezing and thawing



Immunohistochemistry analysis of paraffin embedded Human prostate cancer tissue using 219445 (EXOSC10 Antibody) at a dilution of 1/50 (Cytoplasm and Nucleus).



In comparison with the IHC on the left, the same paraffin-embedded Human prostate cancer tissue is first treated with the fusion protein and then with 219445 (Anti-EXOSC10 Antibody) at dilution 1/50.



Gel: 6% SDS-PAGE, Lysate: 40 µg;

Lane 1-3: Raji, HeLa, 293T cell lysates;

Primary antibody: 219445 (EXOSC10 Antibody) at dilution 1/600;

Secondary antibody: HRP-conjugated Goat anti rabbit IgG at 1/5000 dilution;

Exposure time: 10 seconds



Product Description

Pioneering GTPase and Oncogene Product Development since 2010
