

EXOG RABBIT PAB

货号: S219455

产品全名: EXOG 兔多抗

基因符号 ENGL; ENGLA; ENGLB; ENGL- α ; ENGL-b; ENDOGL1; ENDOGL2

UNIPROT ID: Q9Y2C4 (Gene Accession - BC104212)

背景: This gene encodes an endo/exonuclease with 5'-3' exonuclease activity. The encoded enzyme catalyzes the hydrolysis of ester linkages at the 5' end of a nucleic acid chain. This enzyme is localized to the mitochondria and may play a role in programmed cell death. Alternatively spliced transcript variants have been described. A pseudogene exists on chromosome 18. [provided by RefSeq, Feb 2009]

抗原: Fusion protein of human EXOG

经过测试的应用: ELISA, WB, IHC

推荐稀释比: IHC: 150-300;WB: 500-2000;ELISA: 5000-10000

种属反应性: Rabbit

克隆性: Rabbit Polyclonal

亚型: Immunogen-specific rabbit IgG

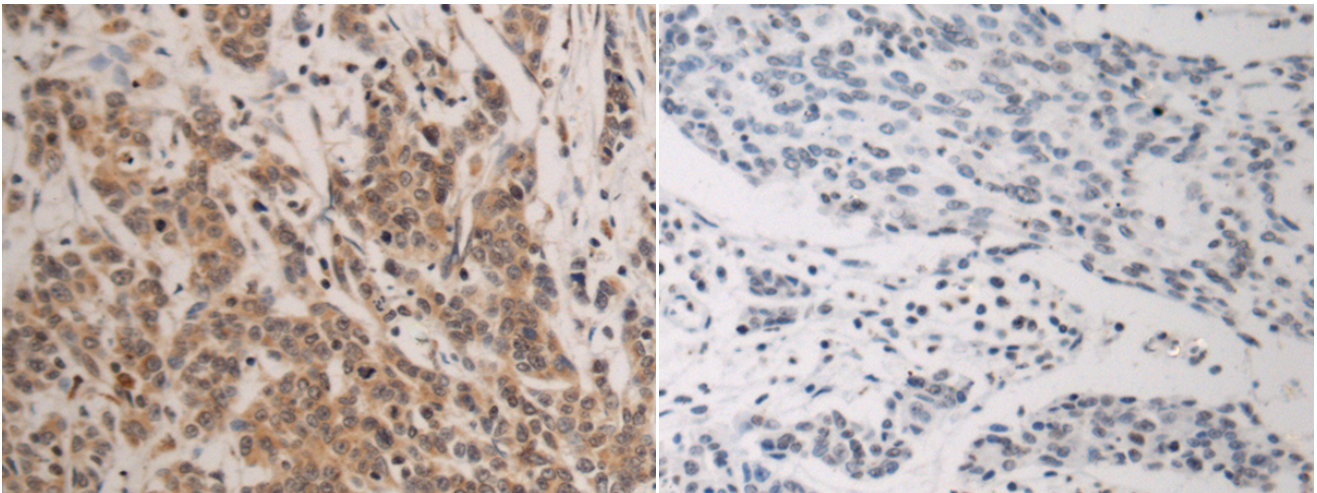
纯化: Antigen affinity purification

种属反应性: Human, Mouse

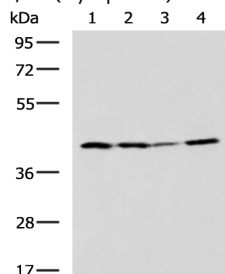
成分: PBS (without Mg²⁺ and Ca²⁺), pH 7.4, 150 mM NaCl, 0.05% Sodium Azide and 40% glycerol

研究领域: Epigenetics and Nuclear Signaling, Metabolism

储存和运输: Store at -20°C. Avoid repeated freezing and thawing



Immunohistochemistry analysis of paraffin embedded Human colorectal cancer tissue using 219455(EXOG Antibody) at a dilution of 1/135(Cytoplasm). In comparison with the IHC on the left, the same paraffin-embedded Human colorectal cancer tissue is first treated with the fusion protein and then with 219455(Anti-EXOG Antibody) at dilution 1/135.



Gel: 8%SDS-PAGE, Lysate: 40 μ g;

Lane 1-4: K562, LOVO, HT-29, HUVEC cell lysates;

Primary antibody: 219455(EXOG Antibody) at dilution 1/800;

Secondary antibody: HRP-conjugated Goat anti rabbit IgG at 1/5000 dilution;

Exposure time: 1 minute