

EXOCYST COMPLEX COMPONENT 3 RABBIT MAB

货号: N262853

产品全名: Exocyst Complex Component 3 兔单克隆抗体

基因符号 SEC6; Sec6p; SEC6L1

UNIPROT ID: O60645

背景: Component of the exocyst complex involved in the docking of exocytic vesicles with fusion sites on the plasma membrane.

抗原: A synthetic peptide of human rSec6

经过测试的应用: WB, ICC/IF, IP

推荐稀释比: WB: 1/500-1/1000 IF: 1/50-1/200 IP: 1/20

种属反应性: Rabbit

克隆性: Rabbit Monoclonal

克隆编号: R07-4D7

分子量: Calculated MW: 86 kDa; Observed MW: 86 kDa

亚型: IgG

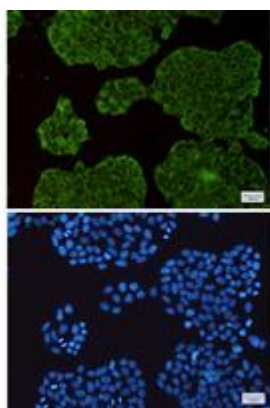
纯化: Affinity Purified

种属反应性: Human, Mouse and Rat

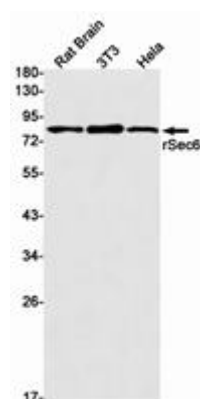
成分: PBS (without Mg²⁺ and Ca²⁺), pH 7.3 containing 50% glycerol, 0.5% BSA and 0.02% sodium azide

研究领域: Signal Transduction

储存和运输: Store at -20°C. Avoid repeated freezing and thawing



Immunocytochemistry analysis of rSec6 (green) in HeLa using rSec6 antibody, and DAPI (blue)



Western blot analysis of rSec6 in rat Brain, 3T3, HeLa lysates using Exocyst Complex Component 3 antibody.



Product Description

Pioneering GTPase and Oncogene Product Development since 2010
