

EXO5 RABBIT PAB

货号: S218602

产品全名: EXO5 兔多抗

基因符号: DEM1; Exo V; hExo5; Clorf176

UNIPROT ID: Q9H790 (Gene Accession - BC021969)

背景: The protein encoded by this gene is a single-stranded DNA (ssDNA)-specific exonuclease that can slide along the DNA before cutting it. However, human replication protein A binds ssDNA and restricts sliding of the encoded protein, providing a 5'-directionality to the enzyme. This protein localizes to nuclear repair loci after DNA damage.

抗原: Fusion protein of human EXO5

经过测试的应用: ELISA, IHC

推荐稀释比: IHC: 25-100; ELISA: 5000-10000

种属反应性: Rabbit

克隆性: Rabbit Polyclonal

亚型: Immunogen-specific rabbit IgG

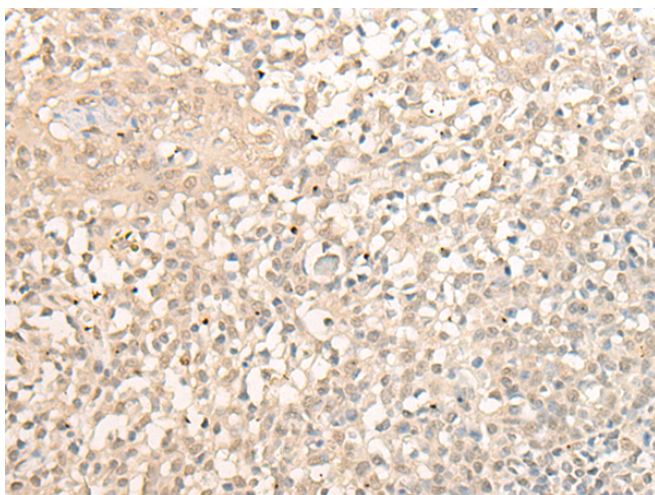
纯化: Antigen affinity purification

种属反应性: Human, Mouse

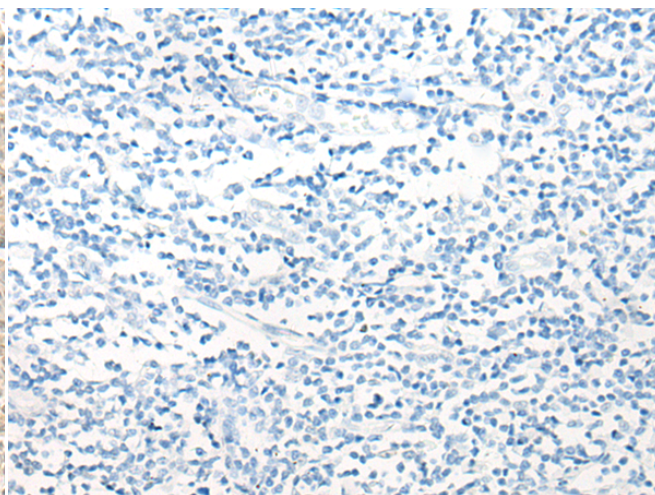
成分: PBS (without Mg²⁺ and Ca²⁺), pH 7.4, 150 mM NaCl, 0.05% Sodium Azide and 40% glycerol

研究领域: Cell Biology, Epigenetics and Nuclear Signaling

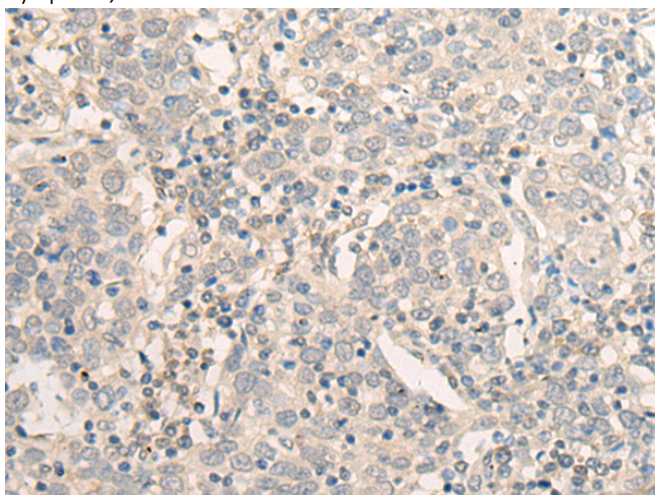
储存和运输: Store at -20°C. Avoid repeated freezing and thawing



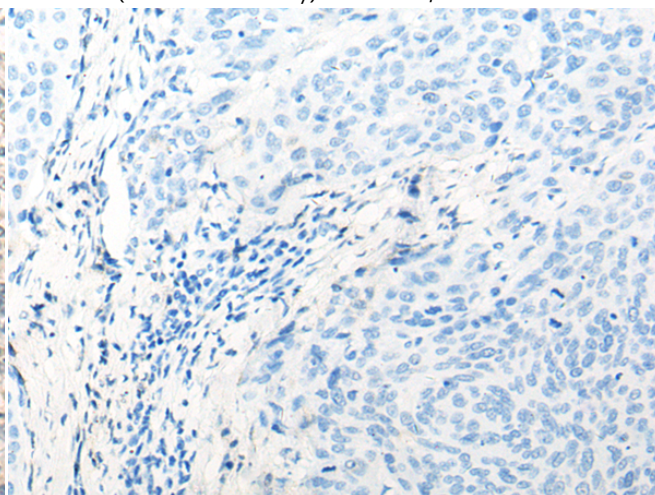
Immunohistochemistry analysis of paraffin embedded Human tonsil tissue using 218602 (EXO5 Antibody) at a dilution of 1/20 (Nucleus and Cytoplasm).



In comparison with the IHC on the left, the same paraffin-embedded Human tonsil tissue is first treated with the fusion protein and then with 218602 (Anti-EXO5 Antibody) at dilution 1/20.



The image on the left is immunohistochemistry of paraffin-embedded Human cervical cancer tissue using 218602 (Anti-EXO5 Antibody) at a dilution of 1/20.



In comparison with the IHC on the left, the same paraffin-embedded Human cervical cancer tissue is first treated with fusion protein and then with D224787 (Anti-EXO5 Antibody) at dilution 1/20.



Product Description

Pioneering GTPase and Oncogene Product Development since 2010
