

EWSR1 RABBIT MAB

货号: N262195

产品全名: EWSR1 兔单克隆抗体

基因符号 EWSR1; EWS; RNA-binding protein EWS; EWS oncogene; Ewing sarcoma breakpoint region 1 蛋白

UNIPROT ID: Q01844

背景: Might normally function as a repressor. EWS-fusion-proteins (EFPS) may play a role in the tumorigenic process. They may disturb gene expression by mimicking, or interfering with the normal function of CTD-POLII within the transcription initiation complex.

抗原: A synthetic peptide of human EWSR1

经过测试的应用: WB, ICC/IF

推荐稀释比: WB: 1/500-1/1000 IF: 1/50-1/200

种属反应性: Rabbit

克隆性: Rabbit Monoclonal

克隆编号: R04-4B3

分子量: Calculated MW: 68 kDa; Observed MW: 85 kDa

亚型: IgG

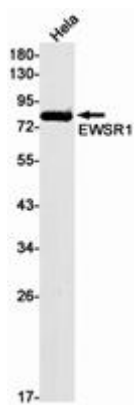
纯化: Affinity Purified

种属反应性: Human

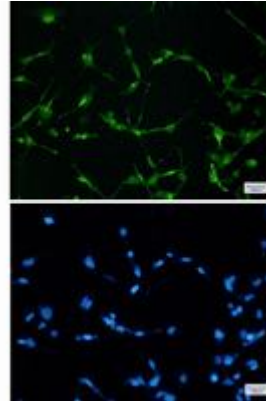
成分: PBS (without Mg²⁺ and Ca²⁺), pH 7.3 containing 50% glycerol, 0.5% BSA and 0.02% sodium azide

研究领域: Tags & Cell Markers

储存和运输: Store at -20°C. Avoid repeated freezing and thawing



Western blot analysis of EWSR1 in HeLa lysates using EWSR1 antibody.



Immunocytochemistry analysis of EWSR1 (green) in 293t using EWSR1 antibody, and DAPI (blue).