

EWSR1 RABBIT MAB

货号: N262196

产品全名: EWSR1 兔单克隆抗体

基因符号 EWSR1; EWS; RNA-binding protein EWS; EWS oncogene; Ewing sarcoma breakpoint region 1 蛋白

UNIPROT ID: Q01844

背景: Might normally function as a repressor. EWS-fusion-proteins (EFPS) may play a role in the tumorigenic process. They may disturb gene expression by mimicking, or interfering with the normal function of CTD-POLII within the transcription initiation complex.

抗原: A synthetic peptide of human EWSR1

经过测试的应用: WB, ICC/IF

推荐稀释比: WB: 1/500-1/1000 IF: 1/50-1/200

种属反应性: Rabbit

克隆性: Rabbit Monoclonal

克隆编号: R09-3A7

分子量: Calculated MW: 68 kDa; Observed MW: 85 kDa

亚型: IgG

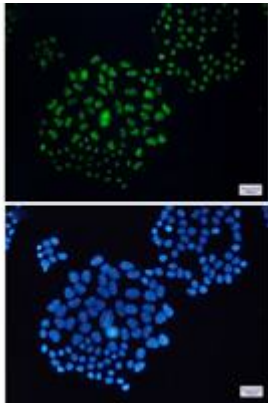
纯化: Affinity Purified

种属反应性: Human, Mouse and Rat

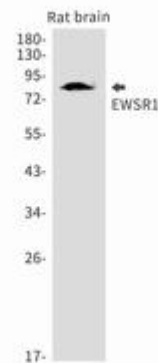
成分: PBS (without Mg²⁺ and Ca²⁺), pH 7.3 containing 50% glycerol, 0.5% BSA and 0.02% sodium azide

研究领域: Tags & Cell Markers

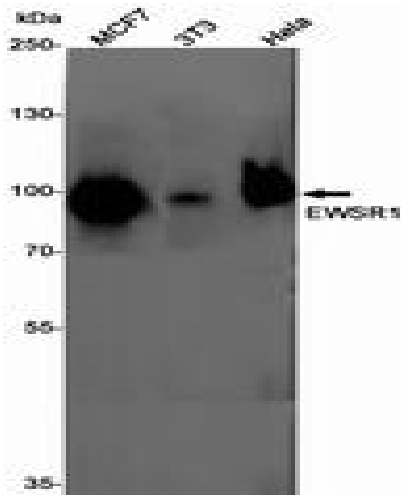
储存和运输: Store at -20°C. Avoid repeated freezing and thawing



Immunocytochemistry analysis of EWSR1 (green) in Hela using EWSR1 antibody, and DAPI (blue)



Western blot analysis of EWSR1 in rat brain lysates using EWSR1 antibody.



Western blot analysis of EWSR1 in MCF-7, 3T3, Hela lysates using EWSR1 antibody.