

EVI2B RABBIT PAB

货号: S221986

产品全名: EVI2B 兔多抗

基因符号: EVDB; CD361; D17S376

UNIPROT ID: P34910 (Gene Accession - NP_006486)

背景: Involved in positive regulation of granulocyte differentiation. Predicted to be integral component of plasma membrane.

抗原: Synthetic peptide of human EVI2B

经过测试的应用: ELISA, WB, IHC

推荐稀释比: IHC: 50-200;WB: 500-2000;ELISA: 5000-10000

种属反应性: Rabbit

克隆性: Rabbit Polyclonal

亚型: Immunogen-specific rabbit IgG

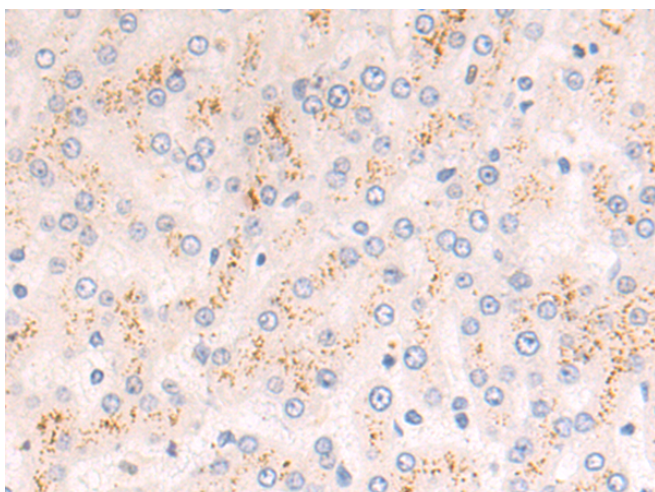
纯化: Antigen affinity purification

种属反应性: Human, Mouse

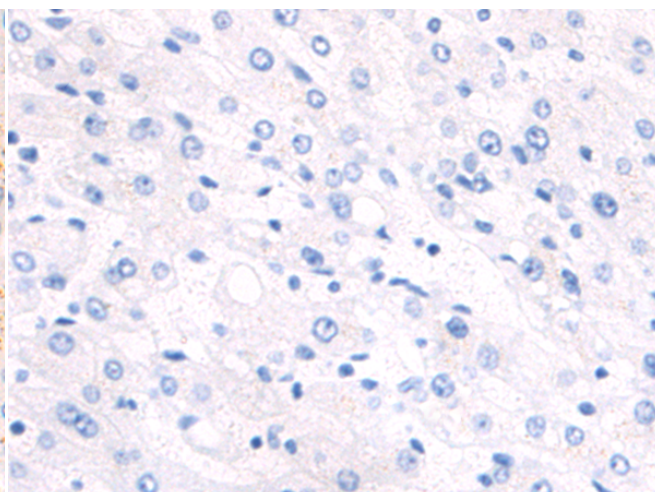
成分: PBS (without Mg²⁺ and Ca²⁺), pH 7.4, 150 mM NaCl, 0.05% Sodium Azide and 40% glycerol

研究领域: Cell Biology

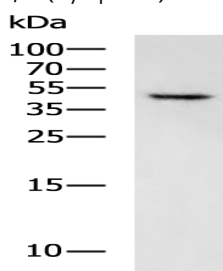
储存和运输: Store at -20°C. Avoid repeated freezing and thawing



Immunohistochemistry analysis of paraffin embedded Human liver cancer tissue using 221986 (EVI2B Antibody) at a dilution of 1/50 (Cytoplasm).



In comparison with the IHC on the left, the same paraffin-embedded Human liver cancer tissue is first treated with the synthetic peptide and then with 221986 (Anti-EVI2B Antibody) at dilution 1/50.



Gel: 12% SDS-PAGE, Lysate: 40 µg;

Lane: U251 cell lysate;

Primary antibody: 221986 (EVI2B Antibody) at dilution 1/800;

Secondary antibody: HRP-conjugated Goat anti rabbit IgG at 1/5000 dilution;

Exposure time: 10 seconds