

ETV4 RABBIT PAB

货号: S215530

产品全名: ETV4 兔多抗

基因符号: E1AF; PEA3; E1A-F; PEAS3

UNIPROT ID: P43268 (Gene Accession - NP_001977)

背景: Transcriptional activator that binds to the enhancer of the adenovirus E1A gene; the core-binding sequence is 5'[AC]GGA[AT]GT-3'.

抗原: Synthetic peptide of human ETV4

经过测试的应用: ELISA, IHC

推荐稀释比: IHC: 20-100; ELISA: 5000-10000

种属反应性: Rabbit

克隆性: Rabbit Polyclonal

亚型: Immunogen-specific rabbit IgG

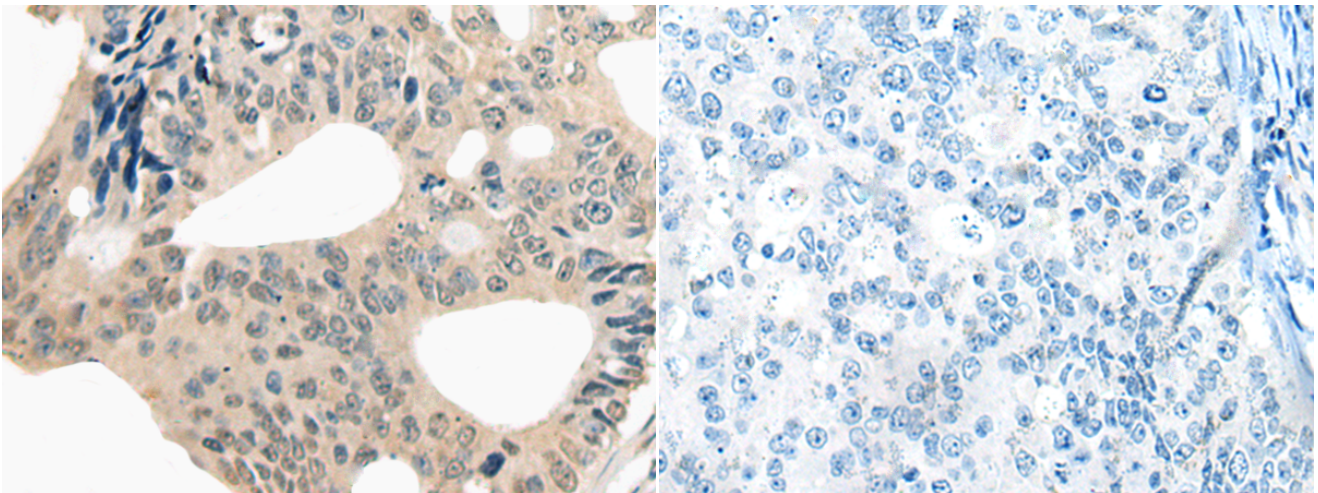
纯化: Antigen affinity purification

种属反应性: Human, Mouse

成分: PBS (without Mg²⁺ and Ca²⁺), pH 7.4, 150 mM NaCl, 0.05% Sodium Azide and 40% glycerol

研究领域: Epigenetics and Nuclear Signaling, Neuroscience

储存和运输: Store at -20°C. Avoid repeated freezing and thawing



Immunohistochemistry analysis of paraffin embedded Human colorectal cancer tissue using 215530(ETV4 Antibody) at a dilution of 1/25(Nucleus and Cytoplasm).

In comparison with the IHC on the left, the same paraffin-embedded Human colorectal cancer tissue is first treated with the synthetic peptide and then with 215530(Anti-ETV4 Antibody) at dilution 1/25.