

ESTROGEN RECEPTOR ALPHA RABBIT MAB

货号: N262193

产品全名: Estrogen Receptor alpha 兔单克隆抗体

基因符号 ESRI; Era; Eralpha; Estrogen receptor; Estradiol receptor; ER-alpha; Estrogen receptor 1; NR3A1; ER; ESR; ESRA; Estrogen receptor alpha

UNIPROT ID: P03372

背景: ER (estrogen receptor 1) a member of the steroid receptor superfamily, contains highly conserved DNA binding (DBD) and ligand binding domains (LBD). Through its estrogen-independent and estrogen-dependent activation domains (AF-1 and AF-2, respectively), ER regulates transcription by recruiting coactivator proteins and interacting with general transcriptional machinery. Phosphorylation provides an important mechanism to regulate ER activity. ER is phosphorylated on multiple sites.

抗原: A synthetic peptide of human Estrogen Receptor alpha

经过测试的应用: WB,IHC-F,IHC-P,ICC/IF,IP,ChIP

推荐稀释比: WB: 1/500-1/1000 IHC: 1/50-1/100 IF: 1/50-1/200 IP: 1/20 ChIP: 1/20

种属反应性: Rabbit

克隆性: Rabbit Monoclonal

克隆编号: R05-1E4

分子量: Calculated MW: 66 kDa; Observed MW: 66 kDa

亚型: IgG

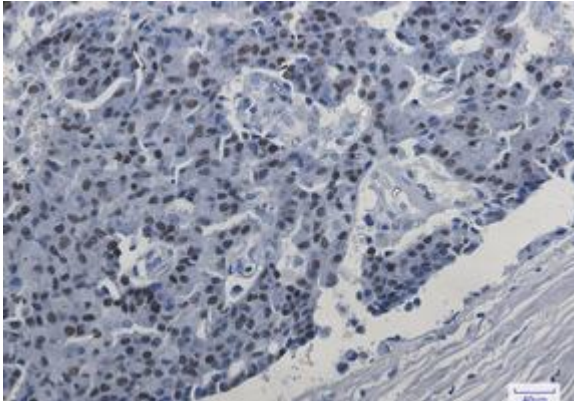
纯化: Affinity Purified

种属反应性: Human

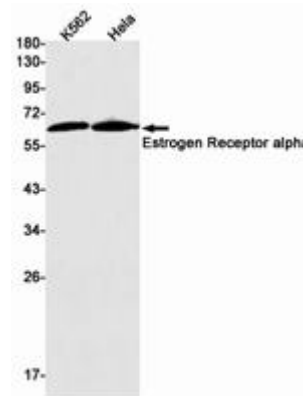
成分: PBS (without Mg²⁺ and Ca²⁺), pH 7.3 containing 50% glycerol, 0.5% BSA and 0.02% sodium azide

研究领域: Neuroscience&Estrogen Receptor

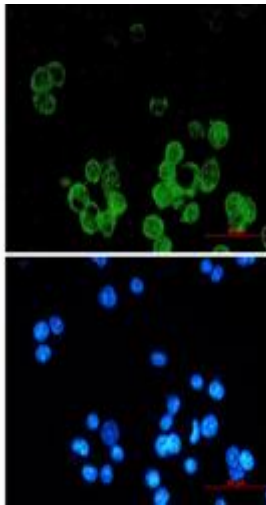
储存和运输: Store at -20°C. Avoid repeated freezing and thawing



Immunohistochemistry analysis of paraffin-embedded Human breast cancer using Estrogen Receptor alpha antibody. High-pressure and temperature Sodium Citrate pH 6.0 was used for antigen retrieval.



Western blot analysis of Estrogen Receptor alpha in K562, Hela lysates using Estrogen Receptor alpha antibody.



Immunocytochemistry analysis of Estrogen Receptor alpha (green) in MCF-7 using Estrogen Receptor alpha antibody, and DAPI (blue)