

## ESRP2 RABBIT PAB

货号: S221980

产品全名: ESRP2 兔多抗

基因符号 RBM35B

**UNIPROT ID:** Q9H6T0 (Gene Accession - NP\_079215)

背景: ESRP2 is an epithelial cell-type-specific splicing regulator (Warzecha et al., 2009 [PubMed 19285943]).

抗原: Synthetic peptide of human ESRP2

经过测试的应用: ELISA, IHC

推荐稀释比: IHC: 50-300; ELISA: 5000-10000

种属反应性: Rabbit

克隆性: Rabbit Polyclonal

亚型: Immunogen-specific rabbit IgG

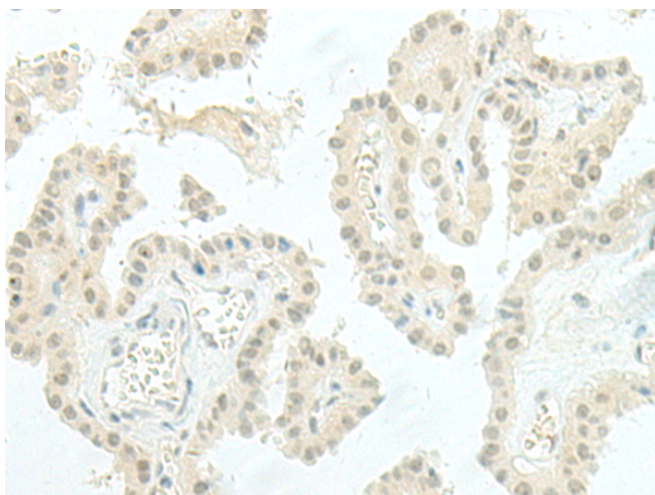
纯化: Antigen affinity purification

种属反应性: Human, Mouse, Rat

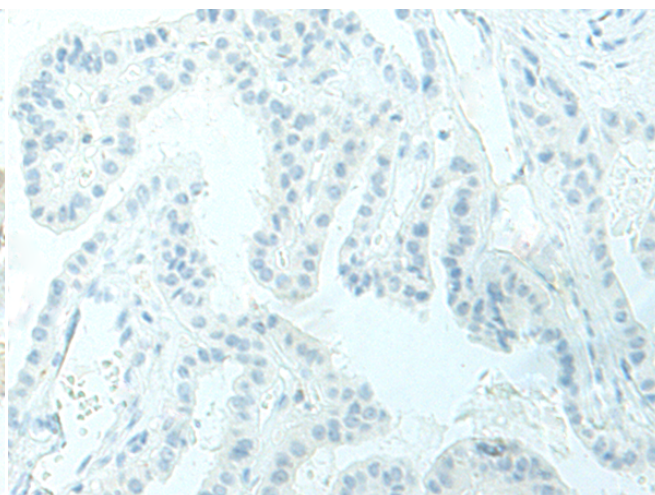
成分: PBS (without Mg<sup>2+</sup> and Ca<sup>2+</sup>), pH 7.4, 150 mM NaCl, 0.05% Sodium Azide and 40% glycerol

研究领域: Epigenetics and Nuclear Signaling, Immunology

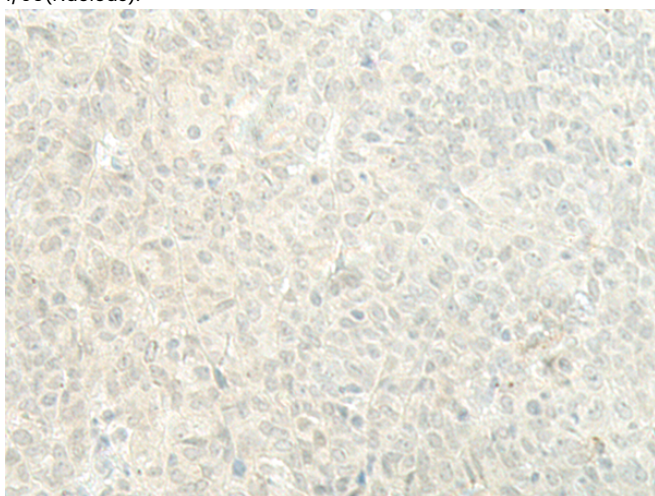
储存和运输: Store at -20°C. Avoid repeated freezing and thawing



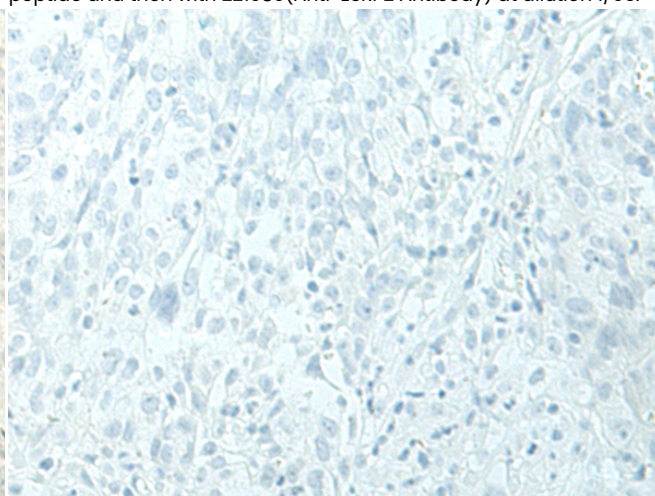
Immunohistochemistry analysis of paraffin embedded Human thyroid cancer tissue using 221980(ESRP2 Antibody) at a dilution of 1/95(Nucleus).



In comparison with the IHC on the left, the same paraffin-embedded Human thyroid cancer tissue is first treated with the synthetic peptide and then with 221980(Anti-ESRP2 Antibody) at dilution 1/95.



The image on the left is immunohistochemistry of paraffin-embedded Human ovarian cancer tissue using 221980(Anti-ESRP2 Antibody) at a dilution of 1/95.



In comparison with the IHC on the left, the same paraffin-embedded Human ovarian cancer tissue is first treated with synthetic peptide and then with D263833(Anti-ESRP2 Antibody) at dilution 1/95.



# Product Description

Pioneering GTPase and Oncogene Product Development since 2010

---