

ESM1 RABBIT PAB

货号: S217409

产品全名: ESM1 兔多抗

基因符号: endocan

UNIPROT ID: Q9NQ30 (Gene Accession - BC011989)

背景: This gene encodes a secreted protein which is mainly expressed in the endothelial cells in human lung and kidney tissues. The expression of this gene is regulated by cytokines, suggesting that it may play a role in endothelium-dependent pathological disorders. The transcript contains multiple polyadenylation and mRNA instability signals. Two transcript variants encoding different isoforms have been found for this gene.

抗原: Fusion protein of human ESM1

经过测试的应用: ELISA, IHC

推荐稀释比: IHC: 50-300; ELISA: 5000-10000

种属反应性: Rabbit

克隆性: Rabbit Polyclonal

亚型: Immunogen-specific rabbit IgG

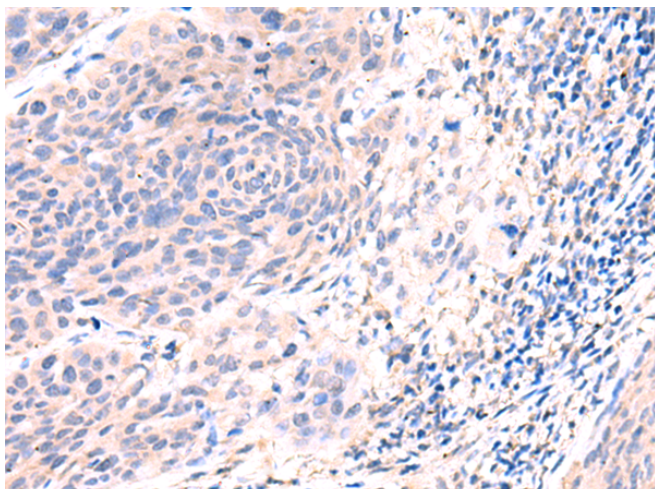
纯化: Antigen affinity purification

种属反应性: Human

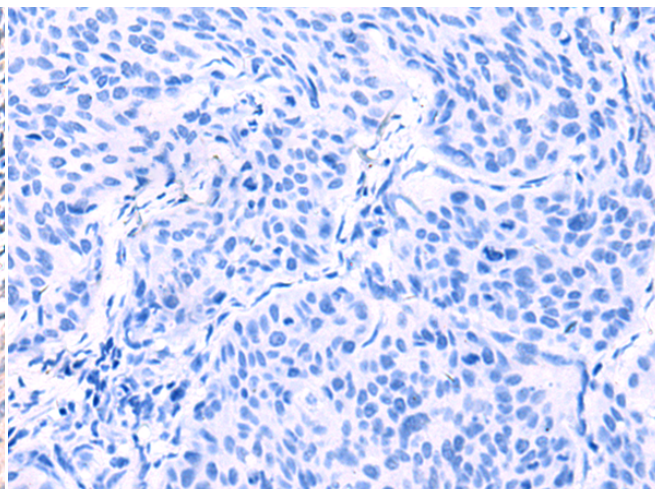
成分: PBS (without Mg²⁺ and Ca²⁺), pH 7.4, 150 mM NaCl, 0.05% Sodium Azide and 40% glycerol

研究领域: Immunology

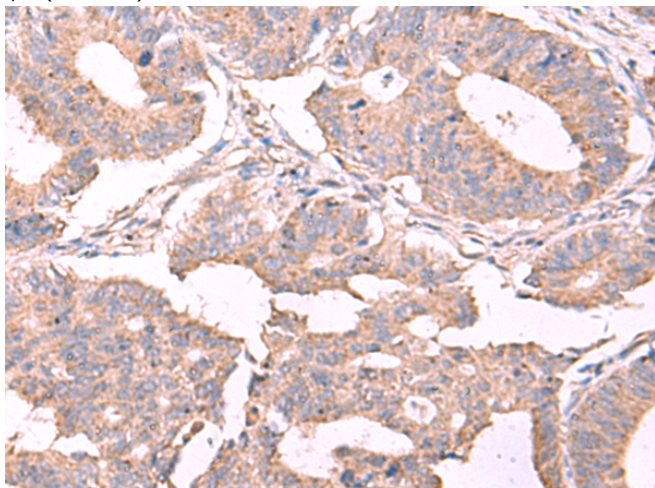
储存和运输: Store at -20°C. Avoid repeated freezing and thawing



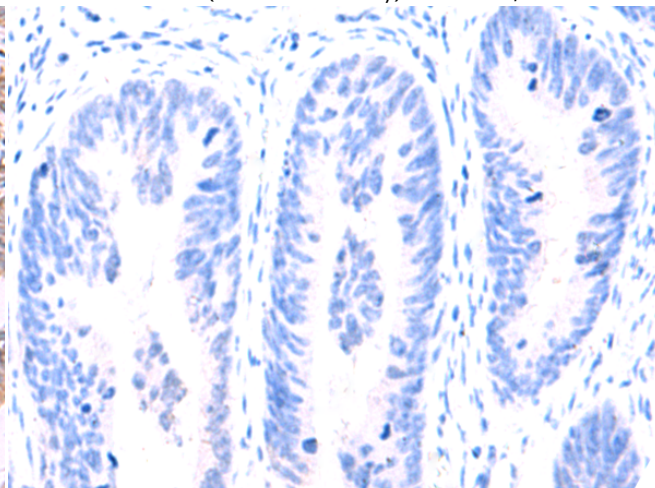
Immunohistochemistry analysis of paraffin embedded Human cervical cancer tissue using 217409(ESM1 Antibody) at a dilution of 1/50 (Secreted).



In comparison with the IHC on the left, the same paraffin-embedded Human cervical cancer tissue is first treated with the fusion protein and then with 217409 (Anti-ESM1 Antibody) at dilution 1/50.



The image on the left is immunohistochemistry of paraffin-embedded Human colorectal cancer tissue using 217409 (Anti-ESM1 Antibody) at a dilution of 1/50.



In comparison with the IHC on the left, the same paraffin-embedded Human colorectal cancer tissue is first treated with fusion protein and then with D222314 (Anti-ESM1 Antibody) at dilution 1/50.



Product Description

Pioneering GTPase and Oncogene Product Development since 2010
