

## ERP27 RABBIT PAB

货号: S218620

产品全名: ERP27 兔多抗

基因符号: PDIA8; C12orf46

**UNIPROT ID:** Q96DN0 (Gene Accession - BC030218 )

**背景:** ERP27 is a noncatalytic member of the protein disulfide isomerase (PDI; see MIM 608012) family of endoplasmic reticulum (ER) proteins (Alanen et al., 2006 [PubMed 16940051]).

**抗原:** Fusion protein of human ERP27

**经过测试的应用:** ELISA, IHC

**推荐稀释比:** IHC: 40-200; ELISA: 5000-10000

**种属反应性:** Rabbit

**克隆性:** Rabbit Polyclonal

**亚型:** Immunogen-specific rabbit IgG

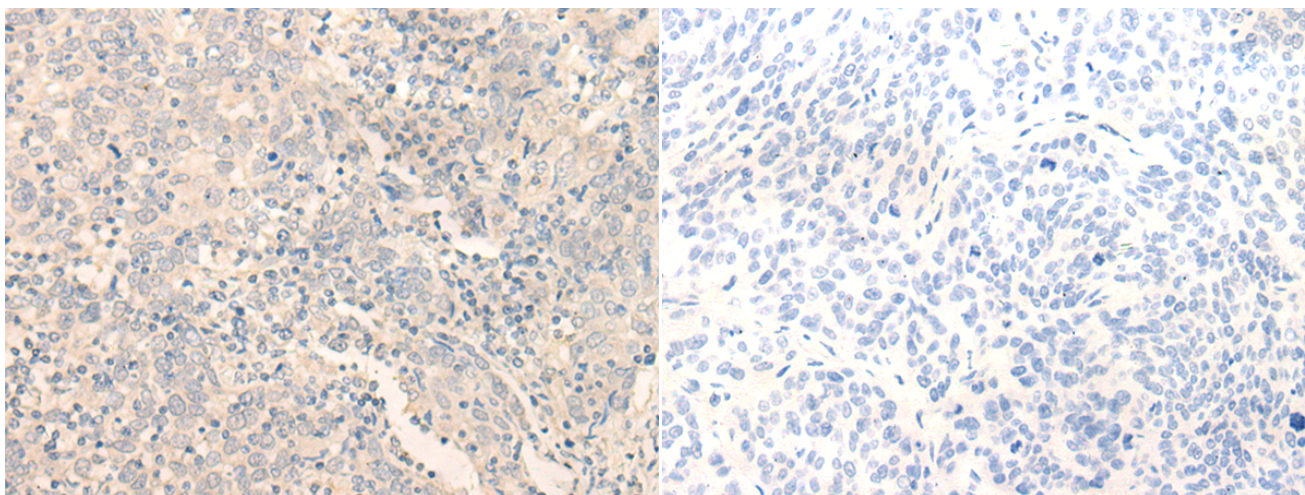
**纯化:** Antigen affinity purification

**种属反应性:** Human

**成分:** PBS (without Mg<sup>2+</sup> and Ca<sup>2+</sup>), pH 7.4, 150 mM NaCl, 0.05% Sodium Azide and 40% glycerol

**研究领域:** Signal Transduction

**储存和运输:** Store at -20°C. Avoid repeated freezing and thawing



Immunohistochemistry analysis of paraffin embedded Human cervical cancer tissue using 218620(ERP27 Antibody) at a dilution of 1/35(Endoplasmic reticulum lumen ).

In comparison with the IHC on the left, the same paraffin-embedded Human cervical cancer tissue is first treated with the fusion protein and then with 218620(Anti-ERP27 Antibody) at dilution 1/35.