

ERK2 RABBIT MAB

货号: N261686

产品全名: ERK2 兔单克隆抗体

基因符号 ERK; p38; p40; p41; ERT1; MAPK2; PRKMI; P42MAPK; p41mapk; MAPK

UNIPROT ID: P28482

背景: Act as an integration point for multiple biochemical signals, and are involved in a wide variety of cellular processes such as proliferation, differentiation, transcription regulation and development. The activation of ERK2 requires its phosphorylation by upstream kinases. ERK2 is located in the cytoplasm of resting cells and translocates into the nucleus upon extracellular stimuli by active transport of a dimer. ERK2 is essential for placental development and ERK2 in the trophoblast compartment may be indispensable for the vascularization of the labyrinth.

抗原: A synthetic peptide of human ERK2

经过测试的应用: WB,IHC-F,IHC-P,ICC/IF,IP

推荐稀释比: WB: 1/500-1/1000 IHC: 1/50-1/100 IF: 1/50-1/200 IP: 1/20

种属反应性: Rabbit

克隆性: Rabbit Monoclonal

克隆编号: R07-1A9

分子量: Calculated MW: 41 kDa; Observed MW: 41 kDa

亚型: IgG

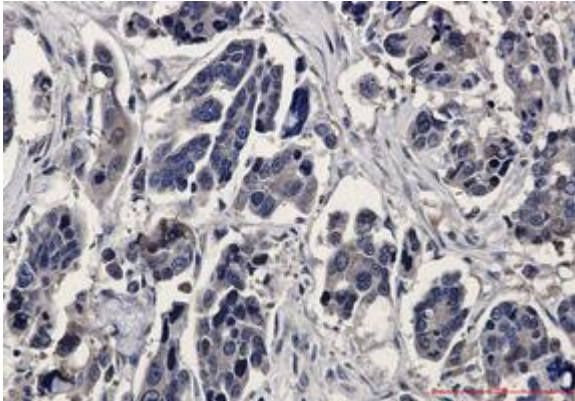
纯化: Affinity Purified

种属反应性: Human, Mouse and Rat

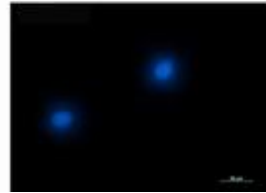
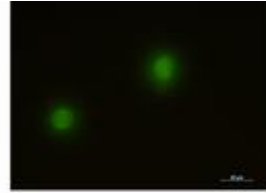
成分: PBS (without Mg²⁺ and Ca²⁺), pH 7.3 containing 50% glycerol, 0.5% BSA and 0.02% sodium azide

研究领域: Neuroscience

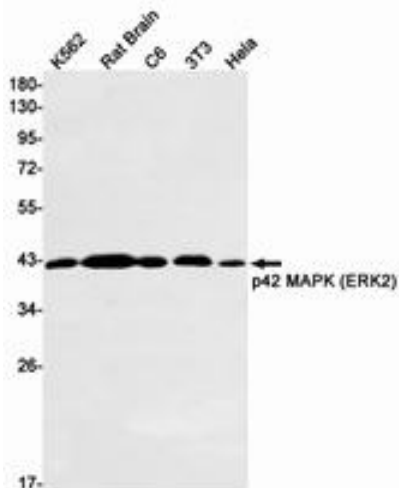
储存和运输: Store at -20°C. Avoid repeated freezing and thawing



Immunohistochemistry analysis of paraffin-embedded Human Cholangiocarcinoma using ERK2 antibody. High-pressure and temperature Sodium Citrate pH 6.0 was used for antigen retrieval.



Immunocytochemistry analysis of ERK2 (green) in K562 using ERK2 antibody, and DAPI (blue).



Western blot analysis of ERK2 in K562, rat Brain, C6, 3T3, HeLa lysates using ERK2 antibody.