

## ERCC8 RABBIT MAB

货号: N263322

产品全名: ERCC8 兔单克隆抗体

基因符号: CKN1; CSA; ERCC8

**UNIPROT ID:** Q13216

背景: Substrate-recognition component of the CSA complex, a DCX (DDB1-CUL4-X-box) E3 ubiquitin-protein ligase complex, involved in transcription-coupled nucleotide excision repair.

抗原: A synthetic peptide of human ERCC8

经过测试的应用: WB,IP

推荐稀释比: WB: 1/500-1/1000 IP: 1/20

种属反应性: Rabbit

克隆性: Rabbit Monoclonal

克隆编号: R03-2F3

分子量: Calculated MW: 44 kDa; Observed MW: 44 kDa

亚型: IgG

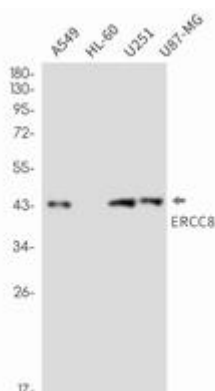
纯化: Affinity Purified

种属反应性: Human

成分: PBS (without Mg<sup>2+</sup> and Ca<sup>2+</sup>), pH 7.3 containing 50% glycerol, 0.5% BSA and 0.02% sodium azide

研究领域: -

储存和运输: Store at -20°C. Avoid repeated freezing and thawing



Western blot analysis of ERCC8 in A549, HL-60, U251, U87-MG lysates using ERCC8 antibody.