

ERCC6L RABBIT PAB

货号: S217408

产品全名: ERCC6L 兔多抗

基因符号: PICH; RAD26L

UNIPROT ID: Q2NKX8 (Gene Accession - BC008808)

背景: This gene encodes a member of the SWI/SNF/Sucrose Non-Fermentable (SWI/SNF2) family of proteins, and contains a SNF2-like ATPase domain and a PICH family domain. One distinguishing feature of this SWI/SNF protein family member is that during interphase, the protein is excluded from the nucleus, and only associates with chromatin after the nuclear envelope has broken down. This protein is a DNA translocase that is thought to bind double-stranded DNA that is exposed to stretching forces, such as those exerted by the mitotic spindle. This protein associates with ribosomal DNA and ultra-fine DNA bridges (UFBs), fine structures that connect sister chromatids during anaphase at some sites such as fragile sites, telomeres and centromeres. This gene is required for the faithful segregation of sister chromatids during mitosis, and the ATPase activity of this protein required for the resolution of UFBs before cytokinesis. [provided by RefSeq, May 2017]

抗原: Fusion protein of human ERCC6L

经过测试的应用: ELISA, IHC

推荐稀释比: IHC: 50-200; ELISA: 5000-10000

种属反应性: Rabbit

克隆性: Rabbit Polyclonal

亚型: Immunogen-specific rabbit IgG

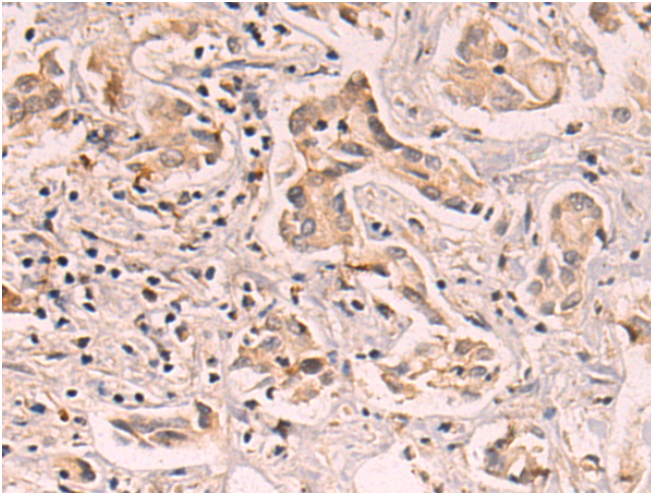
纯化: Antigen affinity purification

种属反应性: Human

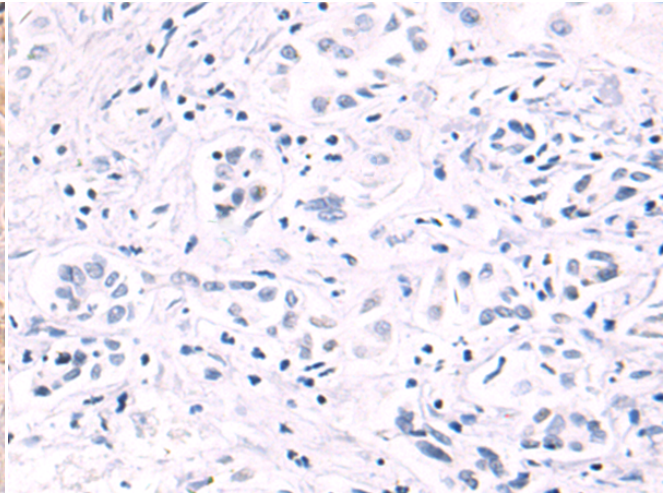
成分: PBS (without Mg²⁺ and Ca²⁺), pH 7.4, 150 mM NaCl, 0.05% Sodium Azide and 40% glycerol

研究领域: Epigenetics and Nuclear Signaling, Cancer

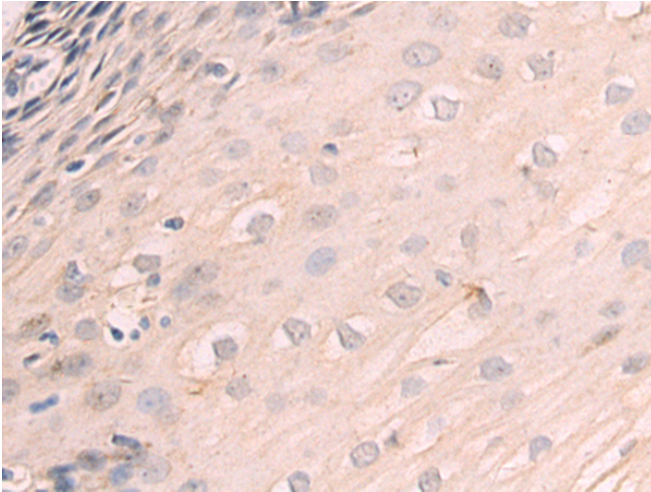
储存和运输: Store at -20°C. Avoid repeated freezing and thawing



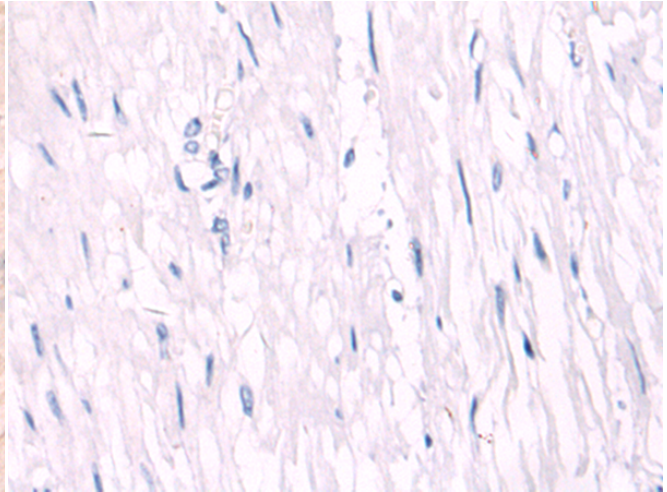
Immunohistochemistry analysis of paraffin embedded Human liver cancer tissue using 217408(ERCC6L Antibody) at a dilution of 1/80(Cytoplasm).



In comparison with the IHC on the left, the same paraffin-embedded Human liver cancer tissue is first treated with the fusion protein and then with 217408(Anti-ERCC6L Antibody) at dilution 1/80.



The image on the left is immunohistochemistry of paraffin-embedded Human esophagus cancer tissue using 217408(Anti-ERCC6L Antibody) at a dilution of 1/80.



In comparison with the IHC on the left, the same paraffin-embedded Human esophagus cancer tissue is first treated with fusion protein and then with D222312(Anti-ERCC6L Antibody) at dilution 1/80.