

## EPSILON TUBULIN (4C4) MOUSE MAB

货号: N261325

产品全名: epsilon Tubulin (4C4) 小鼠单抗

基因符号 FLJ22589; TUBE1; tubulin epsilon 1;  $\epsilon$  tubulin

**UNIPROT ID:** Q9UJT0

**背景:** This gene encodes a member of the tubulin superfamily. This protein localizes to the centriolar sub-distal appendages that are associated with the older of the two centrioles after centrosome duplication. This protein plays a central role in organization of the microtubules during centriole duplication. A pseudogene of this gene is found on chromosome 5.

**抗原:** Synthetic peptide conjugated to KLH.

**经过测试的应用:** IHC-P

**推荐稀释比:** IHC: 1/50-1/100

**种属反应性:** Mouse

**克隆性:** Mouse Monoclonal

**克隆编号:** 4C4-4H9-8C8

**分子量:** -

**亚型:** IgG1

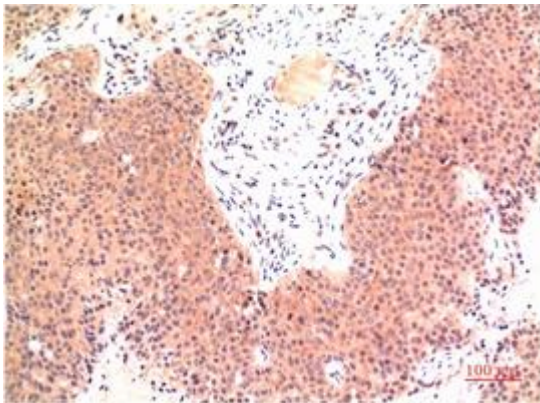
**纯化:** Affinity Purified

**种属反应性:** Human,Rat,Mouse

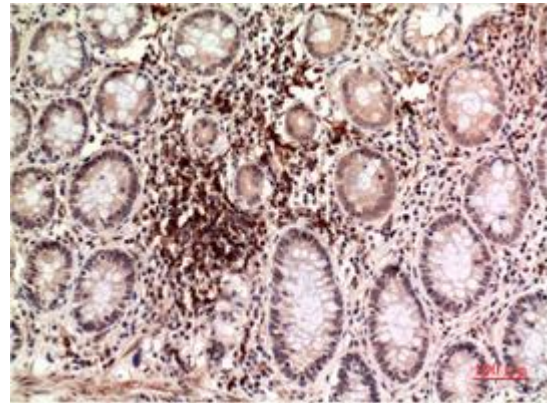
**成分:** PBS (without Mg<sup>2+</sup> and Ca<sup>2+</sup>), pH 7.3 containing 50% glycerol, 0.5% BSA and 0.02% sodium azide

**研究领域:** Signal Transduction

**储存和运输:** Store at -20°C. Avoid repeated freezing and thawing



Immunohistochemical analysis of paraffin-embedded Human tonsils using epsilon Tubulin (4C4) antibody. High-pressure and temperature Sodium Citrate pH 6.0 was used for antigen retrieval.



Immunohistochemistry analysis of paraffin-embedded Human Colon Carcinoma Tissue using epsilon Tubulin (4C4) antibody. High-pressure and temperature Sodium Citrate pH 6.0 was used for antigen retrieval.