

EPS15R RABBIT MAB

货号: N262186

产品全名: EPS15R 兔单克隆抗体

基因符号 EPS15R

UNIPROT ID: Q9UBC2

背景: Seems to be a constitutive component of clathrin-coated pits that is required for receptor-mediated endocytosis. Involved in endocytosis of integrin beta-1 (ITGB1) and transferrin receptor (TFR); internalization of ITGB1 as DAB2-dependent cargo but not TFR seems to require association with DAB2.

抗原: A synthetic peptide of human EPS15R

经过测试的应用: WB,IP

推荐稀释比: WB: 1/500-1/1000 IP: 1/20

种属反应性: Rabbit

克隆性: Rabbit Monoclonal

克隆编号: R03-9A7

分子量: Calculated MW: 94 kDa; Observed MW: 130 kDa

亚型: IgG

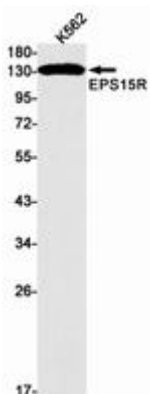
纯化: Affinity Purified

种属反应性: Human

成分: PBS (without Mg²⁺ and Ca²⁺), pH 7.3 containing 50% glycerol, 0.5% BSA and 0.02% sodium azide

研究领域: Signal Transduction

储存和运输: Store at -20°C. Avoid repeated freezing and thawing



Western blot analysis of EPS15R in K562 lysates using EPS15R antibody.



Product Description

Pioneering GTPase and Oncogene Product Development since 2010
