

## EPS15 RABBIT PAB

货号: S221976

产品全名: EPS15 兔多抗

基因符号 AFIP; AF-IP; MLLT5

**UNIPROT ID:** P42566 (Gene Accession - NP\_001972)

**背景:** This gene encodes a protein that is part of the EGFR pathway. The protein is present at clathrin-coated pits and is involved in receptor-mediated endocytosis of EGF. Notably, this gene is rearranged with the HRX/ALL/MLL gene in acute myelogeneous leukemias. Alternative splicing results in multiple transcript variants encoding distinct isoforms.

**抗原:** Synthetic peptide of human EPS15

**经过测试的应用:** ELISA, IHC

**推荐稀释比:** IHC: 30-150; ELISA: 5000-10000

**种属反应性:** Rabbit

**克隆性:** Rabbit Polyclonal

**亚型:** Immunogen-specific rabbit IgG

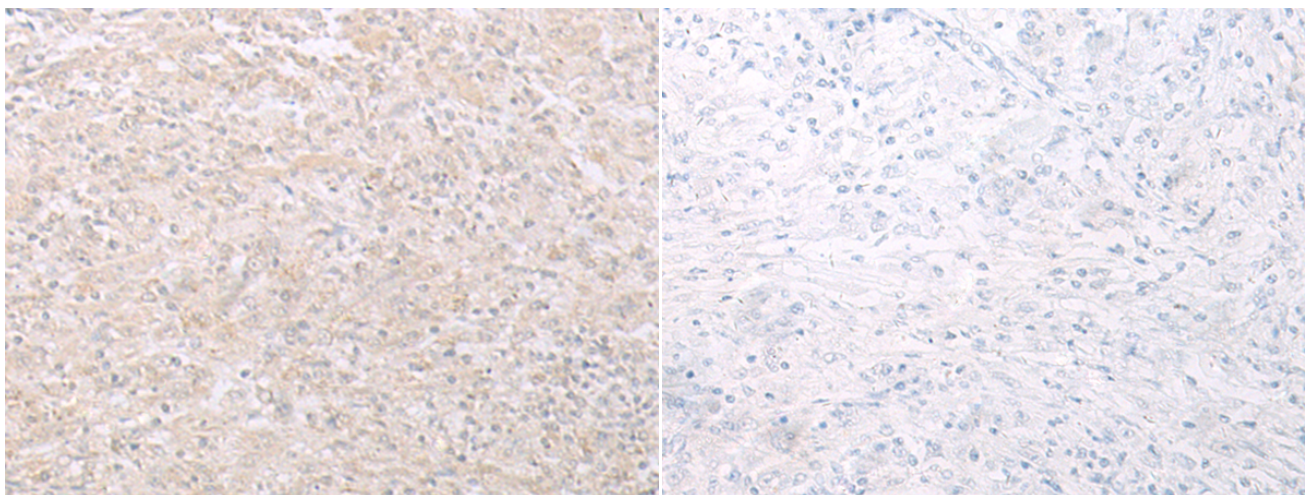
**纯化:** Antigen affinity purification

**种属反应性:** Human, Mouse

**成分:** PBS (without Mg<sup>2+</sup> and Ca<sup>2+</sup>), pH 7.4, 150 mM NaCl, 0.05% Sodium Azide and 40% glycerol

**研究领域:** Signal Transduction

**储存和运输:** Store at -20°C. Avoid repeated freezing and thawing



Immunohistochemistry analysis of paraffin embedded Human liver cancer tissue using 221976 (EPS15 Antibody) at a dilution of 1/35 (Cell membrane and Cytoplasm).

In comparison with the IHC on the left, the same paraffin-embedded Human liver cancer tissue is first treated with the synthetic peptide and then with 221976 (Anti-EPS15 Antibody) at dilution 1/35.