

## EPRS1 RABBIT PAB

货号: S215846

产品全名: EPRS1 兔多抗

基因符号 EARS; EPRS; PARS; QARS; QPRS; HLD15; PIG32; GLUPRORS

**UNIPROT ID:** P07814 (Gene Accession - NP\_004437)

**背景:** Aminoacyl-tRNA synthetases are a class of enzymes that charge tRNAs with their cognate amino acids. The protein encoded by this gene is a multifunctional aminoacyl-tRNA synthetase that catalyzes the aminoacylation of glutamic acid and proline tRNA species. Alternative splicing has been observed for this gene, but the full-length nature and biological validity of the variant have not been determined. [provided by RefSeq, Jul 2008]

**抗原:** Synthetic peptide of human EPRS1

**经过测试的应用:** ELISA, IHC

**推荐稀释比:** IHC: 50-300; ELISA: 5000-10000

**种属反应性:** Rabbit

**克隆性:** Rabbit Polyclonal

**亚型:** Immunogen-specific rabbit IgG

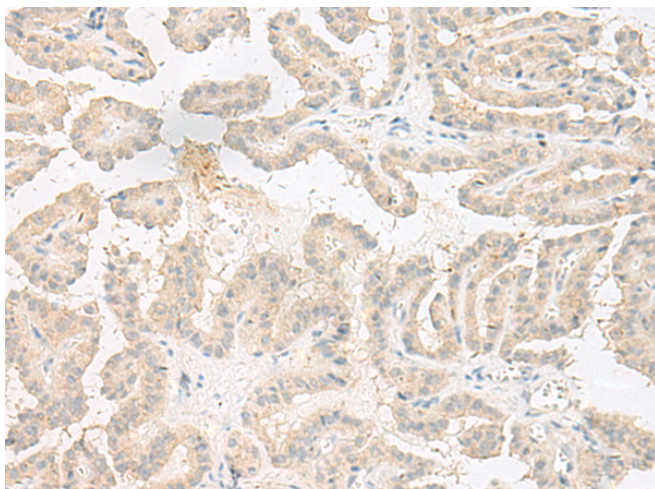
**纯化:** Antigen affinity purification

**种属反应性:** Human, Mouse

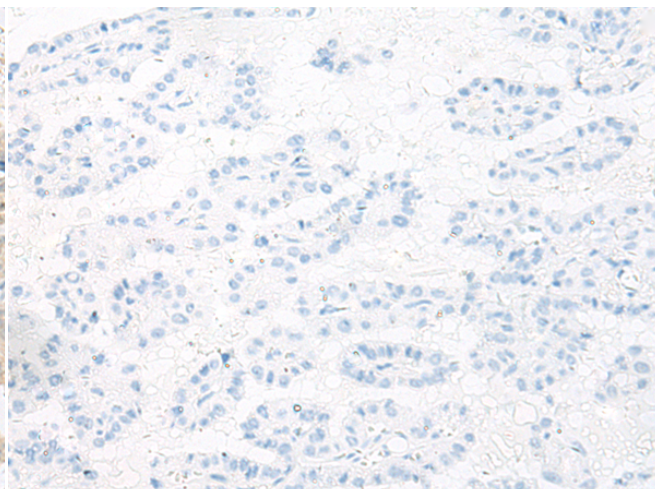
**成分:** PBS (without Mg<sup>2+</sup> and Ca<sup>2+</sup>), pH 7.4, 150 mM NaCl, 0.05% Sodium Azide and 40% glycerol

**研究领域:** Epigenetics and Nuclear Signaling

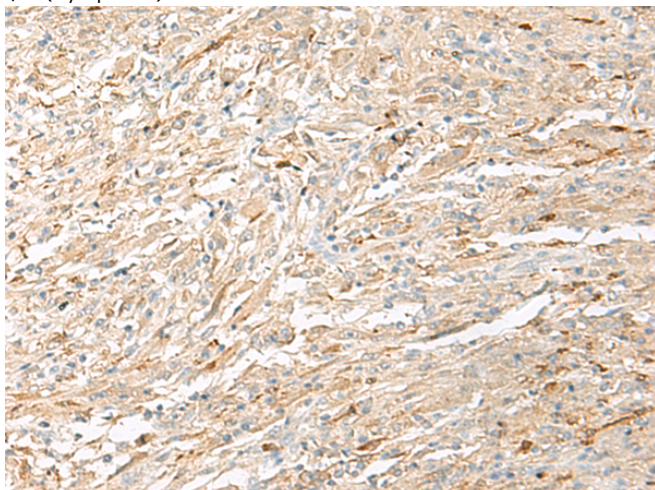
**储存和运输:** Store at -20°C. Avoid repeated freezing and thawing



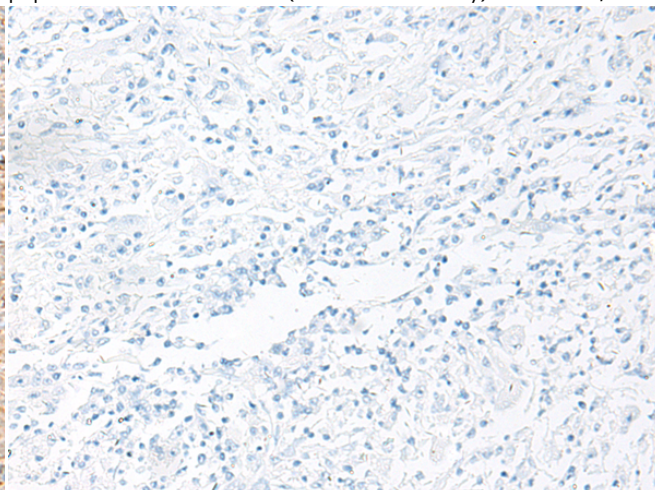
Immunohistochemistry analysis of paraffin embedded Human thyroid cancer tissue using 215846(EPRS1 Antibody) at a dilution of 1/60(Cytoplasm).



In comparison with the IHC on the left, the same paraffin-embedded Human thyroid cancer tissue is first treated with the synthetic peptide and then with 215846(Anti-EPRS1 Antibody) at dilution 1/60.



The image on the left is immunohistochemistry of paraffin-embedded Human liver cancer tissue using 215846(Anti-EPRS1 Antibody) at a dilution of 1/60.



In comparison with the IHC on the left, the same paraffin-embedded Human liver cancer tissue is first treated with synthetic peptide and then with D164001(Anti-EPRS1 Antibody) at dilution 1/60.



# Product Description

Pioneering GTPase and Oncogene Product Development since 2010

---