

EPM2A RABBIT PAB

货号: S218786

产品全名: EPM2A 兔多抗

基因符号 EPM2; MELF

UNIPROT ID: O95278 (Gene Accession - BC005286)

背景: This gene encodes a dual-specificity phosphatase that associates with polyribosomes. The encoded protein may be involved in the regulation of glycogen metabolism. Mutations in this gene have been associated with myoclonic epilepsy of Lafora. Alternative splicing results in multiple transcript variants.

抗原: Fusion protein of human EPM2A

经过测试的应用: ELISA, IHC

推荐稀释比: IHC: 50-300; ELISA: 5000-10000

种属反应性: Rabbit

克隆性: Rabbit Polyclonal

亚型: Immunogen-specific rabbit IgG

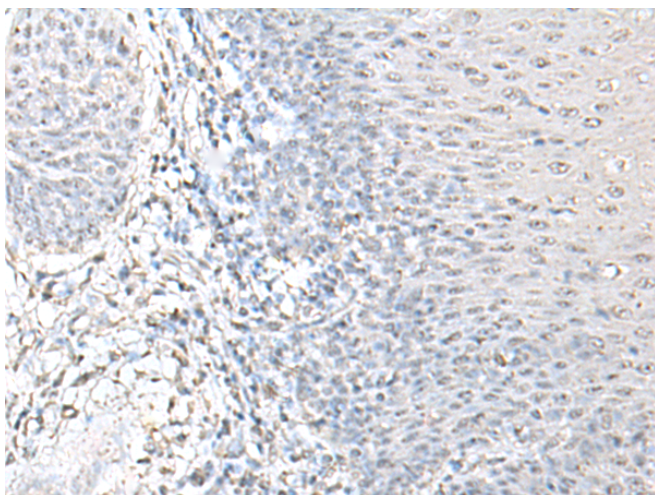
纯化: Antigen affinity purification

种属反应性: Human, Mouse, Rat

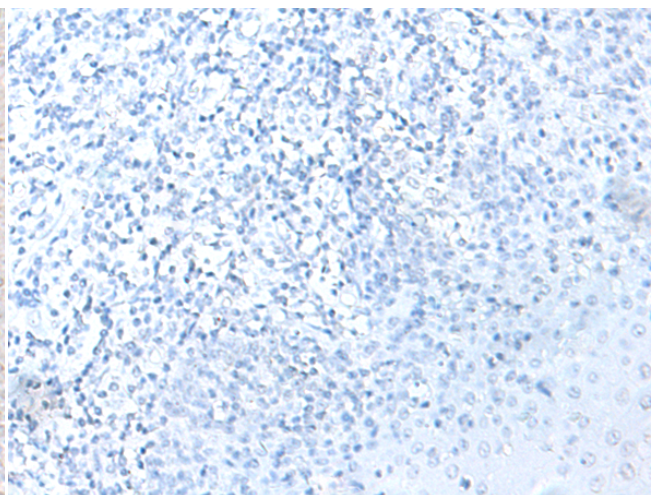
成分: PBS (without Mg²⁺ and Ca²⁺), pH 7.4, 150 mM NaCl, 0.05% Sodium Azide and 40% glycerol

研究领域: Metabolism, Signal Transduction

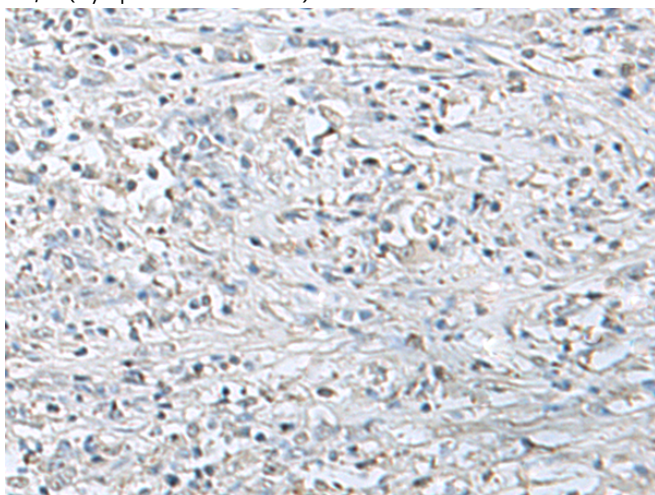
储存和运输: Store at -20°C. Avoid repeated freezing and thawing



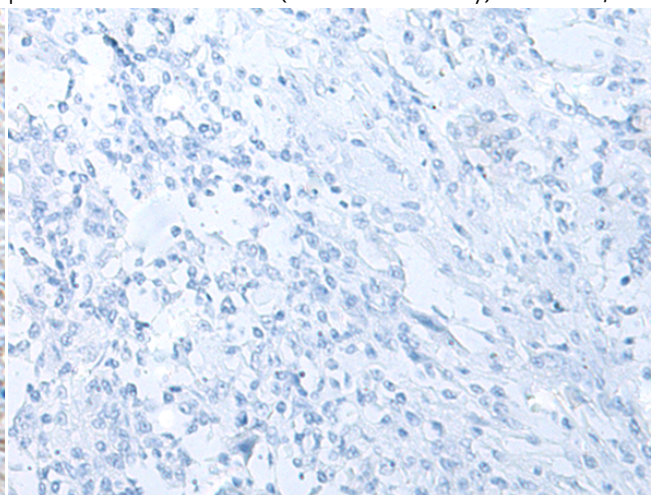
Immunohistochemistry analysis of paraffin embedded Human esophagus cancer tissue using 218786(EPM2A Antibody) at a dilution of 1/55(Cytoplasm and Nucleus).



In comparison with the IHC on the left, the same paraffin-embedded Human esophagus cancer tissue is first treated with the fusion protein and then with 218786(Anti-EPM2A Antibody) at dilution 1/55.



The image on the left is immunohistochemistry of paraffin-embedded Human liver cancer tissue using 218786(Anti-EPM2A Antibody) at a dilution of 1/55.



In comparison with the IHC on the left, the same paraffin-embedded Human liver cancer tissue is first treated with fusion protein and then with D225186(Anti-EPM2A Antibody) at dilution 1/55.



Product Description

Pioneering GTPase and Oncogene Product Development since 2010
