

## EPIGEN RABBIT PAB

货号: N225129

产品全名: Epigen 兔多抗

基因符号 EPGN; Epigen; Epithelial mitogen; EPG

**UNIPROT ID:** Q6UW88

背景: Promotes the growth of epithelial cells.

抗原: The antiserum was produced against synthesized peptide derived from the Internal region of human EPGN. AA range:11-60

经过测试的应用: WB,ELISA

推荐稀释比: WB: 1/500-1/1000 ELISA: 1/10000

种属反应性: Rabbit

克隆性: Rabbit Polyclonal

分子量: Calculated MW: 17 kDa; Observed MW: 17 kDa

亚型: IgG

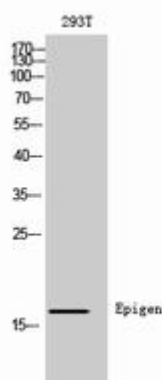
纯化: Affinity Purified

种属反应性: Human

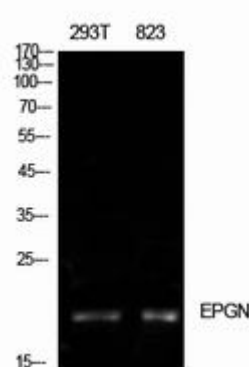
成分: PBS (without Mg<sup>2+</sup> and Ca<sup>2+</sup>), pH 7.3 containing 50% glycerol, 0.5% BSA and 0.02% sodium azide

研究领域: Signal Transduction

储存和运输: Store at -20°C. Avoid repeated freezing and thawing



Western blot analysis of Epigen in 293T lysates using Epigen antibody.



Western blot analysis of Epigen in 293T, 823 lysates using Epigen antibody.