

EPHA6 RABBIT PAB

货号: S214116

产品全名: EPHA6 兔多抗

基因符号: EHK2; EK12; EPA6; EHK-2; HEK12; PRO57066

UNIPROT ID: Q9UF33 (Gene Accession - NP_775926)

背景: Predicted to enable transmembrane-ephrin receptor activity. Predicted to be involved in axon guidance; positive regulation of kinase activity; and transmembrane receptor protein tyrosine kinase signaling pathway. Located in nucleoplasm. [provided by Alliance of Genome Resources, Apr 2022]

抗原: Synthetic peptide of human EPHA6

经过测试的应用: ELISA, IHC

推荐稀释比: IHC: 50-200; ELISA: 5000-10000

种属反应性: Rabbit

克隆性: Rabbit Polyclonal

亚型: Immunogen-specific rabbit IgG

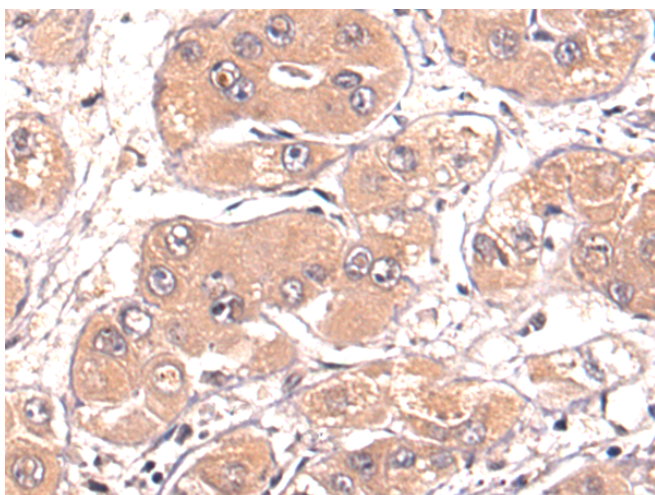
纯化: Antigen affinity purification

种属反应性: Human, Mouse, Rat

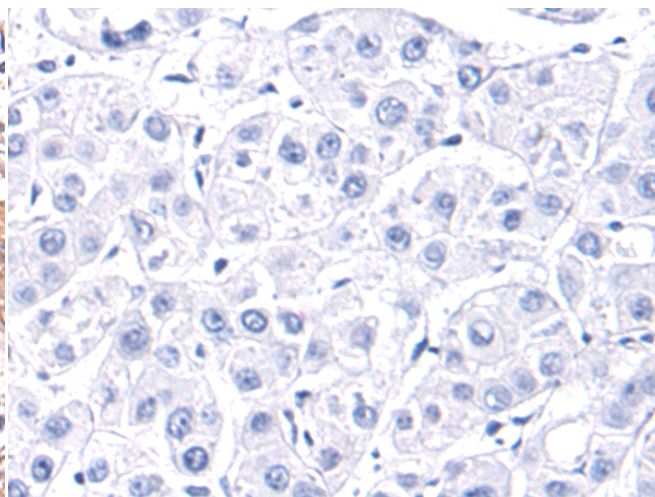
成分: PBS (without Mg²⁺ and Ca²⁺), pH 7.4, 150 mM NaCl, 0.05% Sodium Azide and 40% glycerol

研究领域: Neuroscience, Cardiovascular

储存和运输: Store at -20°C. Avoid repeated freezing and thawing



Immunohistochemistry analysis of paraffin embedded Human tonsil tissue using 214116 (EPHA6 Antibody) at a dilution of 1/50 (Nucleus).



In comparison with the IHC on the left, the same paraffin-embedded Human tonsil tissue is first treated with the synthetic peptide and then with 214116 (Anti-EPHA6 Antibody) at dilution 1/50.