

EPDR1 RABBIT PAB

货号: S217404

产品全名: EPDR1 兔多抗

基因符号: EPDR; UCC1; MERP1; MERP-1

UNIPROT ID: Q9UM22 (Gene Accession - BC018299)

背景: The protein encoded by this gene is a type II transmembrane protein that is similar to two families of cell adhesion molecules, the protocadherins and ependymins. This protein may play a role in calcium-dependent cell adhesion. This protein is glycosylated, and the orthologous mouse protein is localized to the lysosome. Alternative splicing results in multiple transcript variants. A related pseudogene has been identified on chromosome 8.

抗原: Fusion protein of human EPDR1

经过测试的应用: ELISA, WB, IHC

推荐稀释比: IHC: 50-200; WB: 500-2000; ELISA: 5000-10000

种属反应性: Rabbit

克隆性: Rabbit Polyclonal

亚型: Immunogen-specific rabbit IgG

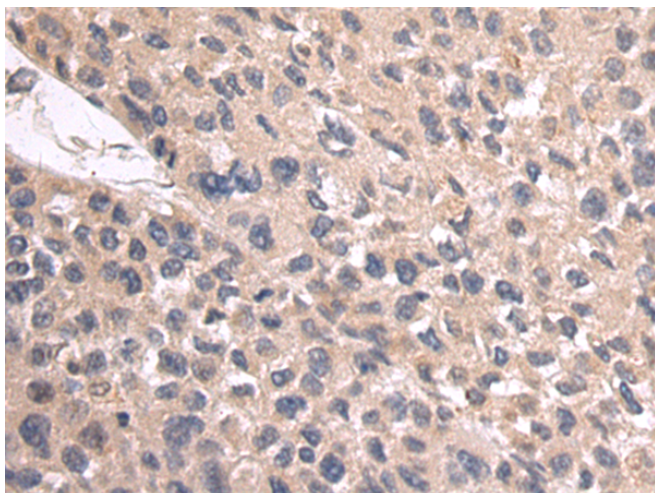
纯化: Antigen affinity purification

种属反应性: Human, Mouse, Rat

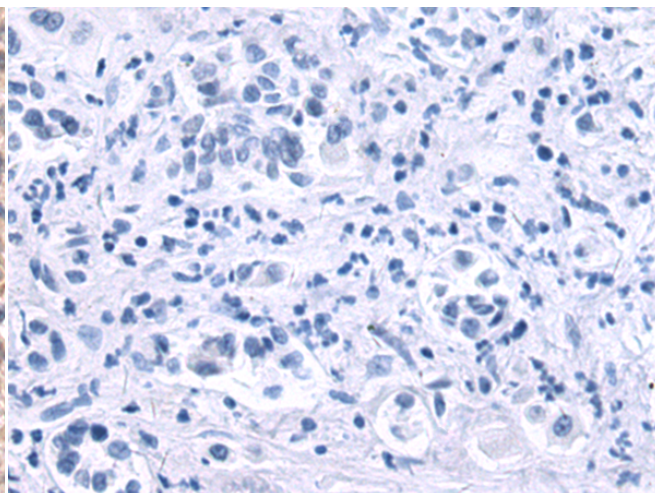
成分: PBS (without Mg²⁺ and Ca²⁺), pH 7.4, 150 mM NaCl, 0.05% Sodium Azide and 40% glycerol

研究领域: Signal Transduction

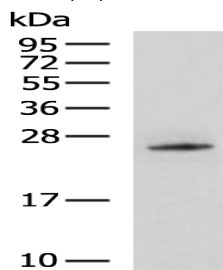
储存和运输: Store at -20°C. Avoid repeated freezing and thawing



Immunohistochemistry analysis of paraffin embedded Human liver cancer tissue using 217404(EPDR1 Antibody) at a dilution of 1/55(Cytoplasm).



In comparison with the IHC on the left, the same paraffin-embedded Human liver cancer tissue is first treated with the fusion protein and then with 217404(Anti-EPDR1 Antibody) at dilution 1/55.



Gel: 12%SDS-PAGE, Lysate: 40 µg;

Lane: Mouse skeletal muscle tissue lysate;

Primary antibody: 217404(EPDR1 Antibody) at dilution 1/400;

Secondary antibody: HRP-conjugated Goat anti rabbit IgG at 1/5000 dilution;

Exposure time: 20 seconds