

EPCAM RABBIT PAB

货号: S219325

产品全名: EPCAM 兔多抗

基因符号: ESA; KSA; M4S1; MK-1; DIAR5; EGP-2; EGP40; KSI/4; MIC18; TROP1; EGP314; HNPCC8; TACSTD1

UNIPROT ID: P16422 (Gene Accession - BC014785)

背景: This gene encodes a carcinoma-associated antigen and is a member of a family that includes at least two type I membrane proteins. This antigen is expressed on most normal epithelial cells and gastrointestinal carcinomas and functions as a homotypic calcium-independent cell adhesion molecule. The antigen is being used as a target for immunotherapy treatment of human carcinomas. Mutations in this gene result in congenital tufting enteropathy.

抗原: Fusion protein of human EPCAM

经过测试的应用: ELISA, WB, IHC

推荐稀释比: IHC: 50-200;WB: 1000-5000;ELISA: 5000-10000

种属反应性: Rabbit

克隆性: Rabbit Polyclonal

亚型: Immunogen-specific rabbit IgG

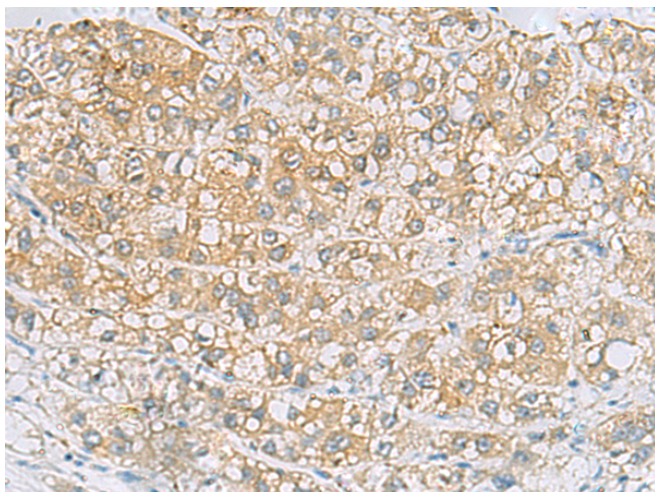
纯化: Antigen affinity purification

种属反应性: Human, Mouse, Rat

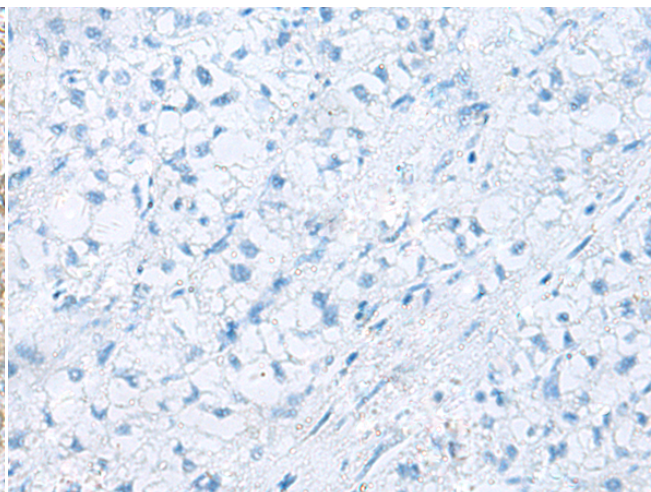
成分: PBS (without Mg²⁺ and Ca²⁺), pH 7.4, 150 mM NaCl, 0.05% Sodium Azide and 40% glycerol

研究领域: Immunology

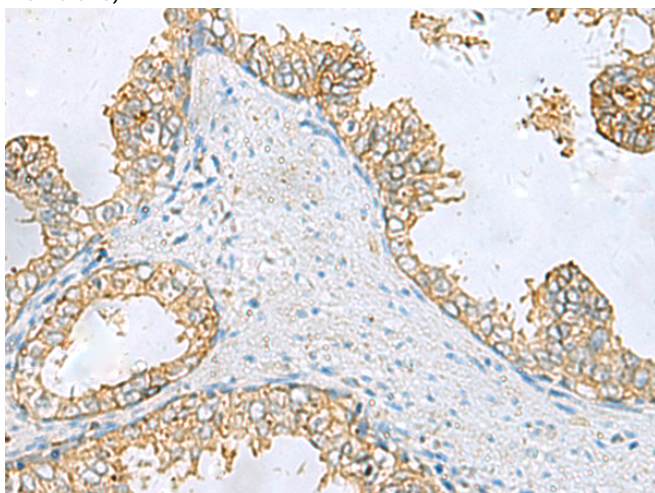
储存和运输: Store at -20°C. Avoid repeated freezing and thawing



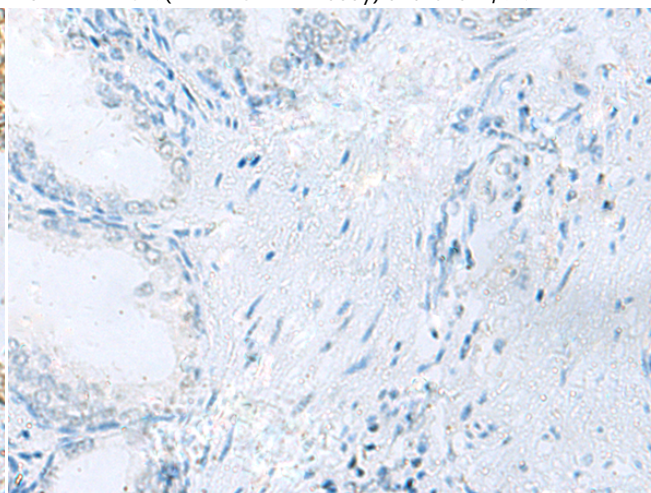
Immunohistochemistry analysis of paraffin embedded Human liver cancer tissue using 219325(EPCAM Antibody) at a dilution of 1/60 (Cell membrane).



In comparison with the IHC on the left, the same paraffin-embedded Human liver cancer tissue is first treated with the fusion protein and then with 219325(Anti-EPCAM Antibody) at dilution 1/60.



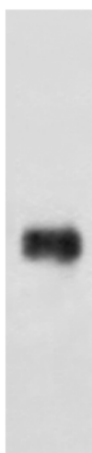
The image on the left is immunohistochemistry of paraffin-embedded Human prostate cancer tissue using 219325(Anti-EPCAM Antibody) at a dilution of 1/60.



In comparison with the IHC on the left, the same paraffin-embedded Human prostate cancer tissue is first treated with fusion protein and then with D226394(Anti-EPCAM Antibody) at dilution 1/60.

kDa

95 —
72 —
55 —
36 —
28 —
17 —



Gel: 8%SDS-PAGE, Lysate: 40 µg;

Lane: HT-29 cell lysate;

Primary antibody: 219325(EPCAM Antibody) at dilution 1/900;

Secondary antibody: HRP-conjugated Goat anti rabbit IgG at 1/5000 dilution;

Exposure time: 30 seconds



Product Description

Pioneering GTPase and Oncogene Product Development since 2010
