

EPCAM (1D5) MOUSE MAB

货号: N261399

产品全名: EpCAM (1D5) 小鼠单抗

基因符号 EPCAM; GA733-2; MIS2; M4S1; MIC18; TACSTD1; TROP1; Epithelial cell adhesion molecule; Ep-CAM; Adenocarcinoma-associated antigen; Cell surface glycoprotein Trop-1; Epithelial cell surface antigen; Epithelial glycoprotein; EGP; Epithelial glycoprotein 314; EGP314; hEGP314; KS 1/4 antigen; KSA; Major gastrointestinal tumor-associated protein GA733-2; Tumor-associated calcium signal transducer 1; CD326

UNIPROT ID: P16422

背景: May act as a physical homophilic interaction molecule between intestinal epithelial cells (IECs) and intraepithelial lymphocytes (IELs) at the mucosal epithelium for providing immunological barrier as a first line of defense against mucosal infection. Plays a role in embryonic stem cells proliferation and differentiation. Up-regulates the expression of FABP5, MYC and cyclins A and E.

抗原: Purified recombinant EpCAM protein fragments expressed in E.coli.

经过测试的应用: WB,IP

推荐稀释比: WB: 1/500-1/1000 IP: 1/20

种属反应性: Mouse

克隆性: Mouse Monoclonal

克隆编号: 1D5-B6-B10

分子量: Calculated MW: 35 kDa; Observed MW: 39 kDa

亚型: IgG1

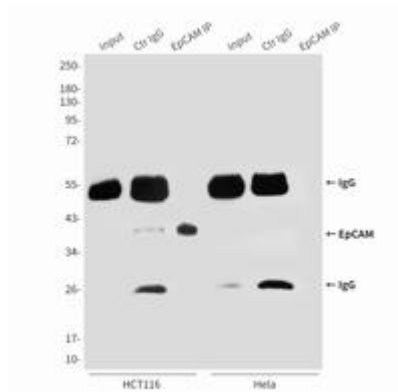
纯化: Affinity Purified

种属反应性: Human

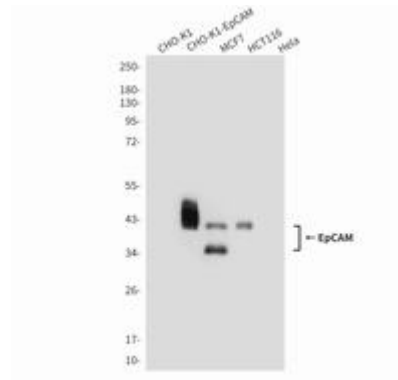
成分: PBS (without Mg²⁺ and Ca²⁺), pH 7.3 containing 50% glycerol, 0.5% BSA and 0.02% sodium azide

研究领域: Tags & Cell Markers

储存和运输: Store at -20°C. Avoid repeated freezing and thawing



Immunoprecipitation analysis of EpCAM (1D5) in HCT116 and HeLa lysates using EpCAM antibody.



Western blot analysis of EpCAM (1D5) in CHO-K1 transfected by FlagEpCAM, MCF-7 (EpCAM positive), HCT116 (EpCAM positive), and HeLa (EpCAM negative) lysates using EpCAM (1D5) antibody.