

EPB41L4B RABBIT PAB

货号: S221933

产品全名: EPB41L4B 兔多抗

基因符号: CG1; EHM2

UNIPROT ID: Q9H329 (Gene Accession - NP_061987)

背景: Up-regulates the activity of the Rho guanine nucleotide exchange factor ARHGGEF18 (By similarity). Involved in the regulation of the circumferential actomyosin belt in epithelial cells (PubMed:22006950). Promotes cellular adhesion, migration and motility in vitro and may play a role in wound healing (PubMed:23664528). May have a role in mediating cytoskeletal changes associated with steroid-induced cell differentiation (PubMed:14521927).

抗原: Synthetic peptide of human EPB41L4B

经过测试的应用: ELISA, IHC

推荐稀释比: IHC: 25-100; ELISA: 5000-10000

种属反应性: Rabbit

克隆性: Rabbit Polyclonal

亚型: Immunogen-specific rabbit IgG

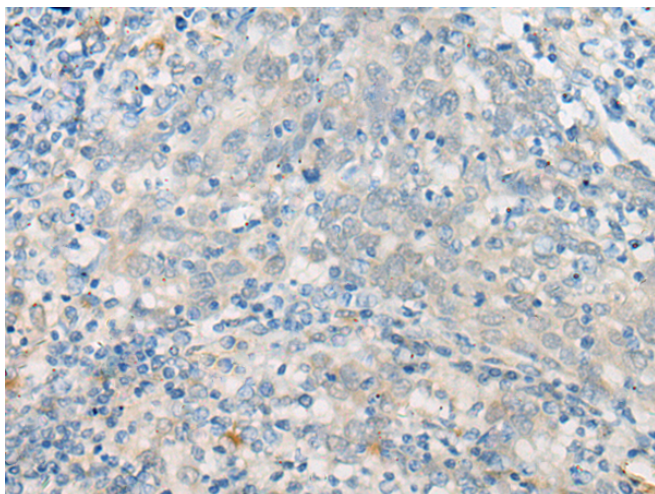
纯化: Antigen affinity purification

种属反应性: Human

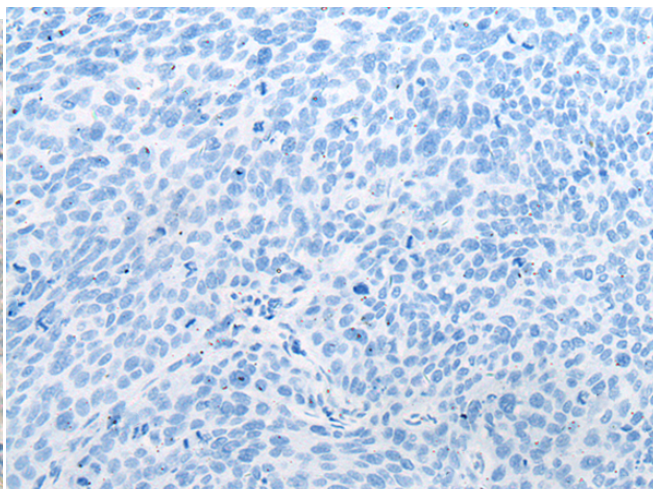
成分: PBS (without Mg²⁺ and Ca²⁺), pH 7.4, 150 mM NaCl, 0.05% Sodium Azide and 40% glycerol

研究领域: Cancer

储存和运输: Store at -20°C. Avoid repeated freezing and thawing



Immunohistochemistry analysis of paraffin embedded Human cervical cancer tissue using 221933(EPB41L4B Antibody) at a dilution of 1/30(Cytoplasm).



In comparison with the IHC on the left, the same paraffin-embedded Human cervical cancer tissue is first treated with the synthetic peptide and then with 221933(Anti-EPB41L4B Antibody) at dilution 1/30.