

## EPB41L2 RABBIT PAB

货号: S221958

产品全名: EPB41L2 兔多抗

基因符号 4.1G; 4.1-G

**UNIPROT ID:** O43491 (Gene Accession - NP\_001422)

背景: Required for dynein-dynactin complex and NUMA1 recruitment at the mitotic cell cortex during anaphase (PubMed:23870127).

抗原: Synthetic peptide of human EPB41L2

经过测试的应用: ELISA, IHC

推荐稀释比: IHC: 50-100; ELISA: 5000-10000

种属反应性: Rabbit

克隆性: Rabbit Polyclonal

亚型: Immunogen-specific rabbit IgG

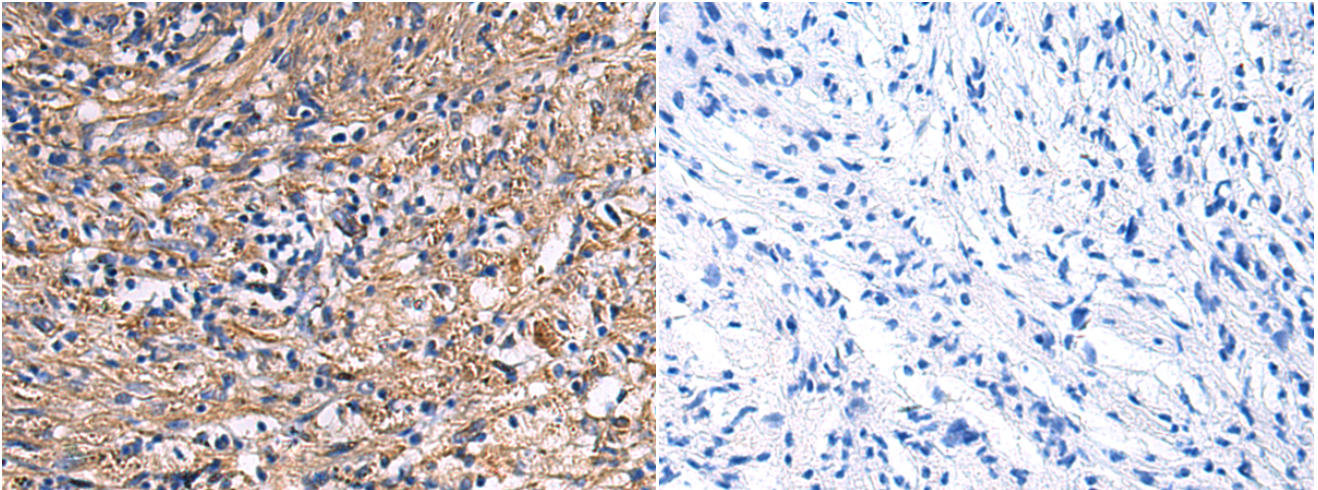
纯化: Antigen affinity purification

种属反应性: Human, Mouse

成分: PBS (without Mg<sup>2+</sup> and Ca<sup>2+</sup>), pH 7.4, 150 mM NaCl, 0.05% Sodium Azide and 40% glycerol

研究领域: Cell Biology

储存和运输: Store at -20°C. Avoid repeated freezing and thawing



Immunohistochemistry analysis of paraffin embedded Human brain using 221958(EPB41L2 Antibody) at a dilution of 1/25(Cytoplasm and Cell membrane).

In comparison with the IHC on the left, the same paraffin-embedded Human brain is first treated with the synthetic peptide and then with 221958(Anti-EPB41L2 Antibody) at dilution 1/25.