

## ENTPD7 RABBIT PAB

货号: S217604

产品全名: ENTPD7 兔多抗

基因符号: LALP1

**UNIPROT ID:** Q9NQZ7 (Gene Accession - BC122857)

**背景:** LALP1 (lysosomal apyrase-like protein 1), also known as ENTPD7 (ectonucleoside triphosphate diphosphohydrolase 7), is a 604 amino acid multi-pass membrane protein that belongs to the GDA1/CD39 NTPase family. Preferentially hydrolyzing nucleoside 5'-triphosphates, LALP1 and has an order of activity with respect to possible substrates, which is UTP > GTP > CTP.

**抗原:** Fusion protein of human ENTPD7

**经过测试的应用:** ELISA, IHC

**推荐稀释比:** IHC: 50-200; ELISA: 2000-5000

**种属反应性:** Rabbit

**克隆性:** Rabbit Polyclonal

**亚型:** Immunogen-specific rabbit IgG

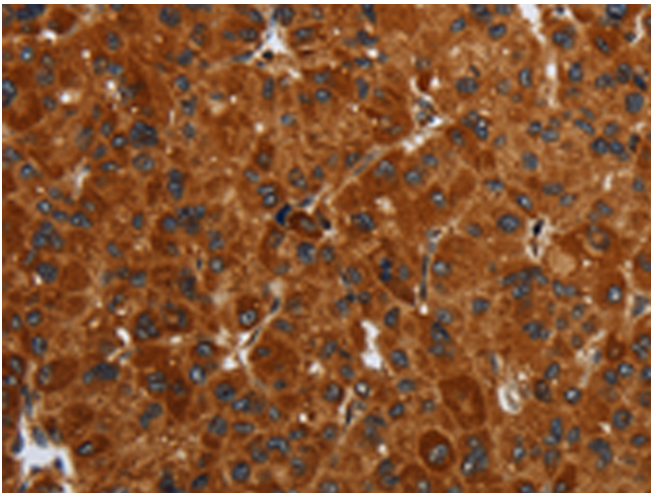
**纯化:** Antigen affinity purification

**种属反应性:** Human, Mouse

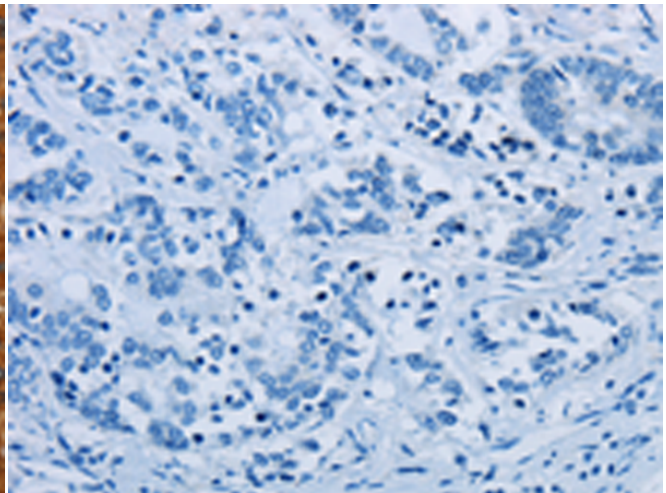
**成分:** PBS (without Mg<sup>2+</sup> and Ca<sup>2+</sup>), pH 7.4, 150 mM NaCl, 0.05% Sodium Azide and 40% glycerol

**研究领域:** Metabolism, Signal Transduction

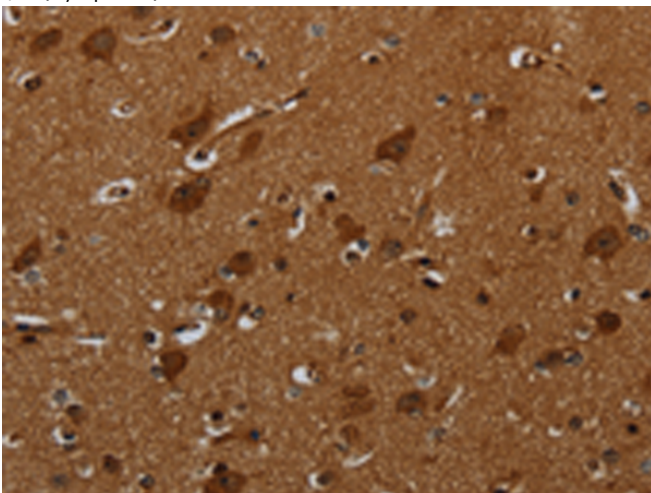
**储存和运输:** Store at -20°C. Avoid repeated freezing and thawing



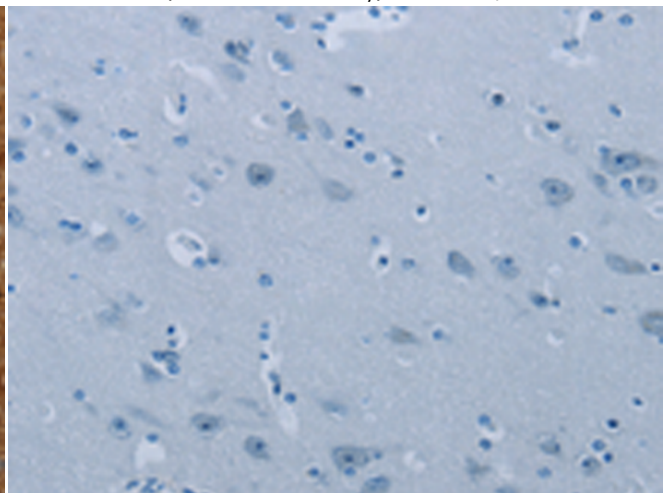
Immunohistochemistry analysis of paraffin embedded Human liver cancer tissue using 217604(ENTPD7 Antibody) at a dilution of 1/40(Cytoplasm).



In comparison with the IHC on the left, the same paraffin-embedded Human liver cancer tissue is first treated with the fusion protein and then with 217604(Anti-ENTPD7 Antibody) at dilution 1/40.



The image on the left is immunohistochemistry of paraffin-embedded Human brain tissue using 217604(Anti-ENTPD7 Antibody) at a dilution of 1/40.



In comparison with the IHC on the left, the same paraffin-embedded Human brain tissue is first treated with fusion protein and then with D222685(Anti-ENTPD7 Antibody) at dilution 1/40.



# Product Description

Pioneering GTPase and Oncogene Product Development since 2010

---