

ENTPD4 RABBIT PAB

货号: S219405

产品全名: ENTPD4 兔多抗

基因符号: LAP70; LALP70; LYSALI; UDPase; NTPDase-4

UNIPROT ID: Q9Y227 (Gene Accession - BC034477)

背景: This gene encodes a member of the apyrase protein family. Apyrases are enzymes that catalyze the hydrolysis of nucleotide diphosphates and triphosphates in a calcium or magnesium-dependent manner. The encoded protein is an endo-apyrase and may play a role in salvaging nucleotides from lysosomes. Alternatively spliced transcript variants encoding multiple isoforms have been observed for this gene, and these isoforms may differ in divalent cation dependence and substrate specificity.

抗原: Fusion protein of human ENTPD4

经过测试的应用: ELISA, IHC

推荐稀释比: IHC: 200-300; ELISA: 5000-10000

种属反应性: Rabbit

克隆性: Rabbit Polyclonal

亚型: Immunogen-specific rabbit IgG

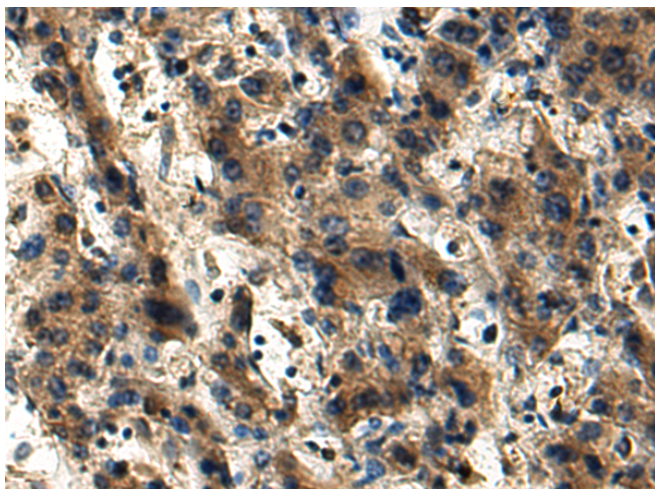
纯化: Antigen affinity purification

种属反应性: Human, Mouse

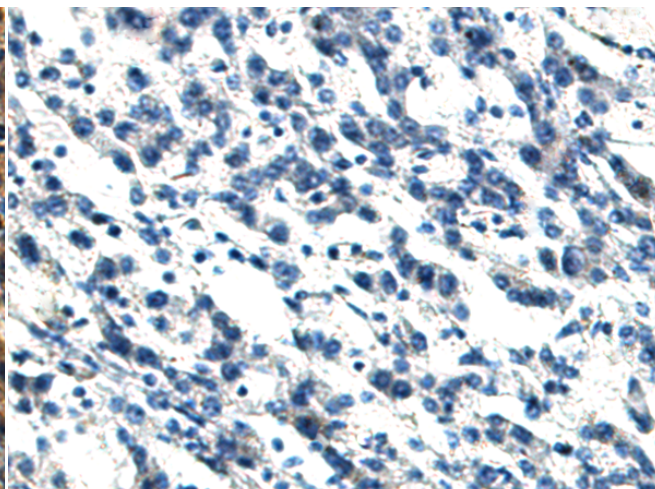
成分: PBS (without Mg²⁺ and Ca²⁺), pH 7.4, 150 mM NaCl, 0.05% Sodium Azide and 40% glycerol

研究领域: Epigenetics and Nuclear Signaling

储存和运输: Store at -20°C. Avoid repeated freezing and thawing



Immunohistochemistry analysis of paraffin embedded Human liver cancer tissue using 219405(ENTPD4 Antibody) at a dilution of 1/180(Cytoplasm).



In comparison with the IHC on the left, the same paraffin-embedded Human liver cancer tissue is first treated with the fusion protein and then with 219405(Anti-ENTPD4 Antibody) at dilution 1/180.