

ENT2 RABBIT MAB

货号: N262182

产品全名: ENT2 兔单克隆抗体

基因符号 DER12; ei-type; HNP36; Nucleoside transporter; SLC29A2

UNIPROT ID: Q14542

背景: Mediates equilibrative transport of purine, pyrimidine nucleosides and the purine base hypoxanthine. Very less sensitive than SLC29A1 to inhibition by nitrobenzylthioinosine (NBMPR), dipyridamole, dilazep and draflazine.

抗原: A synthetic peptide of human ENT2

经过测试的应用: WB,IHC-F,IHC-P,ICC/IF

推荐稀释比: WB: 1/500-1/1000 IHC: 1/50-1/100 IF: 1/50-1/200

种属反应性: Rabbit

克隆性: Rabbit Monoclonal

克隆编号: R03-2K6

分子量: Calculated MW: 50 kDa; Observed MW: 60 kDa

亚型: IgG

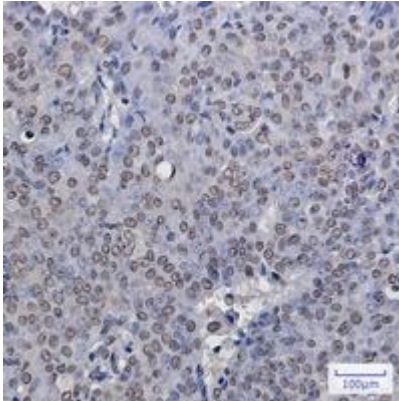
纯化: Affinity Purified

种属反应性: Human

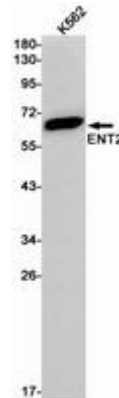
成分: PBS (without Mg²⁺ and Ca²⁺), pH 7.3 containing 50% glycerol, 0.5% BSA and 0.02% sodium azide

研究领域: Signal Transduction

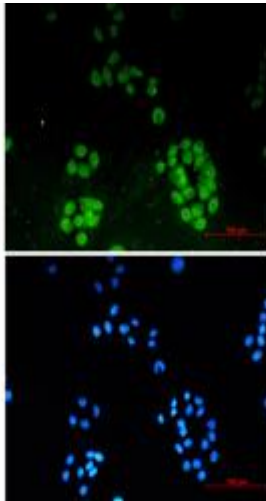
储存和运输: Store at -20°C. Avoid repeated freezing and thawing



Immunohistochemistry analysis of paraffin-embedded Human breast cancer using ENT2 antibody. High-pressure and temperature Sodium Citrate pH 6.0 was used for antigen retrieval.



Western blot analysis of ENT2 in K562 lysates using ENT2 antibody.



Immunocytochemistry analysis of ENT2 (green) in HeLa using ENT2 antibody, and DAPI (blue)