

ENPP2 RABBIT PAB

货号: N225181

产品全名: ENPP2 兔多抗

基因符号 ENPP2; ATX; PDNP2; Ectonucleotide pyrophosphatase/phosphodiesterase family member 2; E-NPP 2; Autotaxin; Extracellular lysophospholipase D; LysoPLD

UNIPROT ID: Q13822

背景: Hydrolyzes lysophospholipids to produce the signaling molecule lysophosphatidic acid (LPA) in extracellular fluids.

抗原: The antiserum was produced against synthesized peptide derived from the Internal region of human ENPP2. AA range:401-450

经过测试的应用: WB,ELISA

推荐稀释比: WB: 1/500-1/1000 ELISA: 1/10000

种属反应性: Rabbit

克隆性: Rabbit Polyclonal

分子量: Calculated MW: 99 kDa; Observed MW: 99 kDa

亚型: IgG

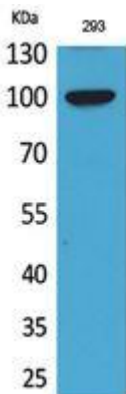
纯化: Affinity Purified

种属反应性: Human, Mouse and Rat

成分: PBS (without Mg²⁺ and Ca²⁺), pH 7.3 containing 50% glycerol, 0.5% BSA and 0.02% sodium azide

研究领域: Cancer

储存和运输: Store at -20°C. Avoid repeated freezing and thawing



Western blot analysis of ENPP2 in 293 lysates using ENPP2 antibody.