

ENO3 RABBIT MAB

货号: N262179

产品全名: ENO3 兔单克隆抗体

基因符号 enolase 3; MSE; GSD13

UNIPROT ID: P13929

背景: Appears to have a function in striated muscle development and regeneration.

抗原: A synthetic peptide of human ENO3

经过测试的应用: WB, ICC/IF

推荐稀释比: WB: 1/500-1/1000 IF: 1/50-1/200

种属反应性: Rabbit

克隆性: Rabbit Monoclonal

克隆编号: R07-5B2

分子量: Calculated MW: 47 kDa; Observed MW: 47 kDa

亚型: IgG

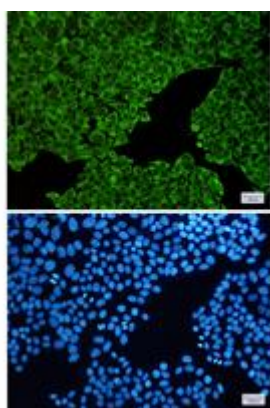
纯化: Affinity Purified

种属反应性: Human, Mouse and Rat

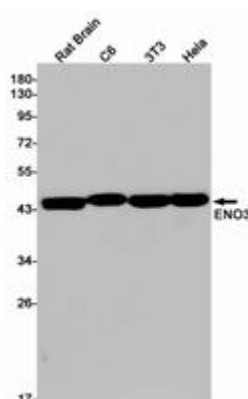
成分: PBS (without Mg²⁺ and Ca²⁺), pH 7.3 containing 50% glycerol, 0.5% BSA and 0.02% sodium azide

研究领域: Signal Transduction

储存和运输: Store at -20°C. Avoid repeated freezing and thawing



Immunocytochemistry analysis of ENO1/ENO2/ENO3 (green) in HeLa using ENO1/ENO2/ENO3 antibody, and DAPI (blue)



Western blot analysis of ENO3 in rat Brain, C6, 3T3, HeLa lysates using ENO3 antibody.



Product Description

Pioneering GTPase and Oncogene Product Development since 2010
