

ENO1 RABBIT MAB

货号: N261761

产品全名: ENO1 兔单克隆抗体

基因符号 NNE; PPH; MPBI; ENO1L1; HEL-S-17

UNIPROT ID: P06733

背景: Multifunctional enzyme that, as well as its role in glycolysis, plays a part in various processes such as growth control, hypoxia tolerance and allergic responses. May also function in the intravascular and pericellular fibrinolytic system due to its ability to serve as a receptor and activator of plasminogen on the cell surface of several cell-types such as leukocytes and neurons. Stimulates immunoglobulin production. MBP1 binds to the myc promoter and acts as a transcriptional repressor. May be a tumor suppressor. Miscellaneous Used as a diagnostic marker for many tumors and, in the heterodimeric form, alpha/gamma, as a marker for hypoxic brain injury after cardiac arrest. Also marker for endometriosis. Antibodies against alpha-enolase are present in sera from patients with cancer-associated retinopathy syndrome (CAR), a progressive blinding disease which occurs in the presence of systemic tumor growth, primarily small-cell carcinoma of the lung and other malignancies. Is identified as an autoantigen in Hashimoto encephalopathy (HE) a rare autoimmune disease associated with Hashimoto thyroiditis (HT). HT is a disorder in which destructive processes overcome the potential capacity of thyroid replacement leading to hypothyroidism.

抗原: A synthetic peptide of human ENO1

经过测试的应用: WB, IHC-F, IHC-P, ICC/IF, IP

推荐稀释比: WB: 1/500-1/1000 IHC: 1/50-1/100 IF: 1/50-1/200 IP: 1/20

种属反应性: Rabbit

克隆性: Rabbit Monoclonal

克隆编号: R01-4C8

分子量: Calculated MW: 47 kDa; Observed MW: 47 kDa

亚型: IgG

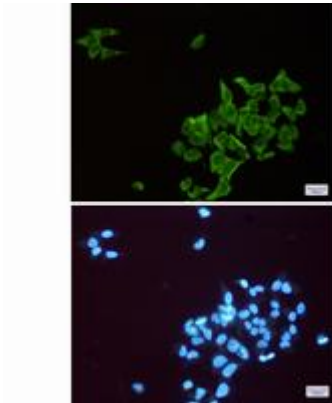
纯化: Affinity Purified

种属反应性: Human, Mouse and Rat

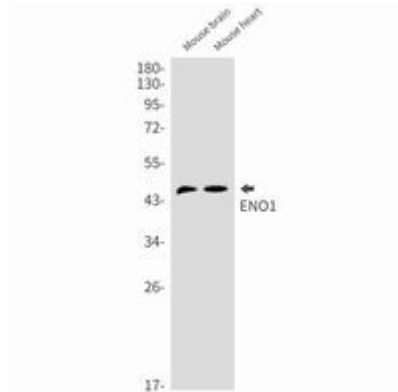
成分: PBS (without Mg²⁺ and Ca²⁺), pH 7.3 containing 50% glycerol, 0.5% BSA and 0.02% sodium azide

研究领域: Signal Transduction

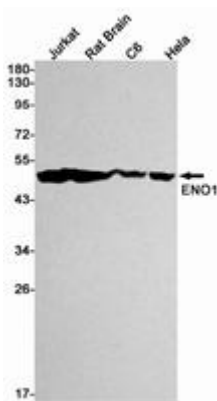
储存和运输: Store at -20°C. Avoid repeated freezing and thawing



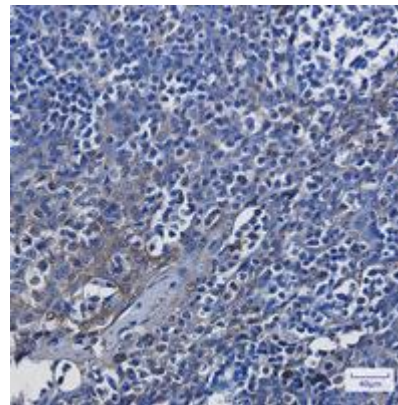
Immunocytochemistry analysis of ENO1 (green) in Hela using ENO1 antibody, and DAPI (blue)



Western blot analysis of ENO1 in mouse brain, mouse heart lysates using ENO1 antibody.



Western blot analysis of ENO1 in Jurkat, rat Brain, C6, Hela lysates using ENO1 antibody.



Immunohistochemistry analysis of paraffin-embedded Human tonsil using ENO1 antibody. High-pressure and temperature Sodium Citrate pH 6.0 was used for antigen retrieval.