

ENKD1 RABBIT PAB

货号: S219343

产品全名: ENKD1 兔多抗

基因符号: C16orf48; DAKV6410

UNIPROT ID: Q9H0I2 (Gene Accession - BC008284)

背景: The exact function of ENKD1 remains unknown.

抗原: Fusion protein of human ENKD1

经过测试的应用: ELISA, WB, IHC

推荐稀释比: IHC: 50-200;WB: 500-2000;ELISA: 5000-10000

种属反应性: Rabbit

克隆性: Rabbit Polyclonal

亚型: Immunogen-specific rabbit IgG

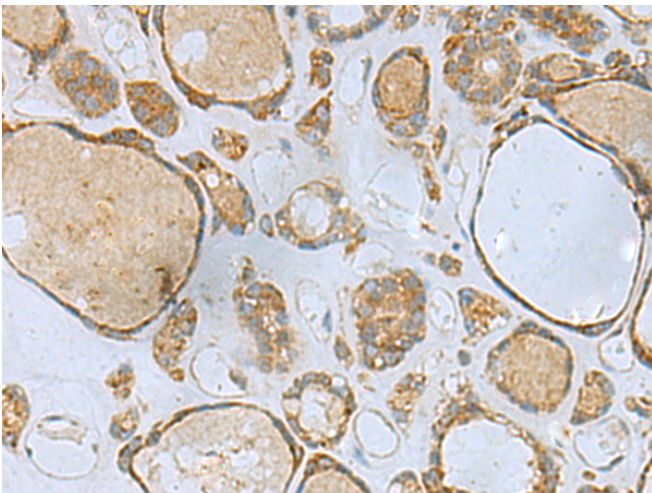
纯化: Antigen affinity purification

种属反应性: Human, Mouse

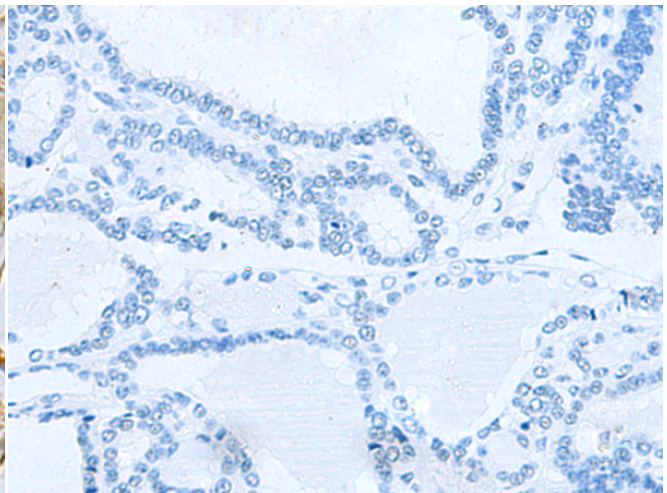
成分: PBS (without Mg²⁺ and Ca²⁺), pH 7.4, 150 mM NaCl, 0.05% Sodium Azide and 40% glycerol

研究领域: Signal Transduction, Cell Biology

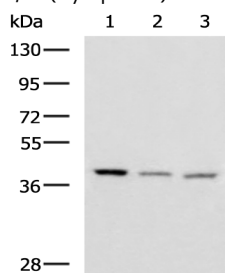
储存和运输: Store at -20°C. Avoid repeated freezing and thawing



Immunohistochemistry analysis of paraffin embedded Human thyroid cancer tissue using 219343(ENKD1 Antibody) at a dilution of 1/80(Cytoplasm).



In comparison with the IHC on the left, the same paraffin-embedded Human thyroid cancer tissue is first treated with the fusion protein and then with 219343(Anti-ENKD1 Antibody) at dilution 1/80.



Gel: 8%SDS-PAGE, Lysate: 40 µg;

Lane 1-3: Human cerebrum tissue, Human cerebella tissue, Mouse brain tissue lysates;

Primary antibody: 219343(ENKD1 Antibody) at dilution 1/1150;

Secondary antibody: HRP-conjugated Goat anti rabbit IgG at 1/5000 dilution;

Exposure time: 3 minutes