

ENG RABBIT PAB

货号: S217249

产品全名: ENG 兔多抗

基因符号: END; HHT1; ORW1

UNIPROT ID: P17813 (Gene Accession - BC014271)

背景: This gene encodes a homodimeric transmembrane protein which is a major glycoprotein of the vascular endothelium. This protein is a component of the transforming growth factor beta receptor complex and it binds to the beta1 and beta3 peptides with high affinity. Mutations in this gene cause hereditary hemorrhagic telangiectasia, also known as Osler-Rendu-Weber syndrome 1, an autosomal dominant multisystemic vascular dysplasia. This gene may also be involved in preeclampsia and several types of cancer. Alternatively spliced transcript variants encoding different isoforms have been found for this gene.

抗原: Fusion protein of human ENG

经过测试的应用: ELISA, WB, IHC

推荐稀释比: IHC: 100-200;WB: 500-2000;ELISA: 5000-10000

种属反应性: Rabbit

克隆性: Rabbit Polyclonal

亚型: Immunogen-specific rabbit IgG

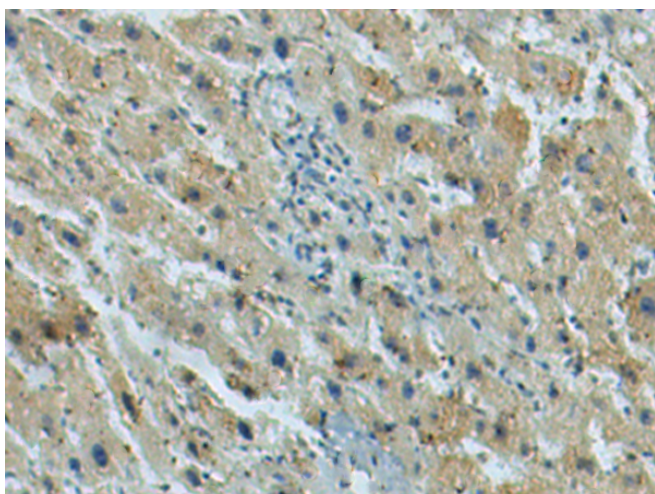
纯化: Antigen affinity purification

种属反应性: Human

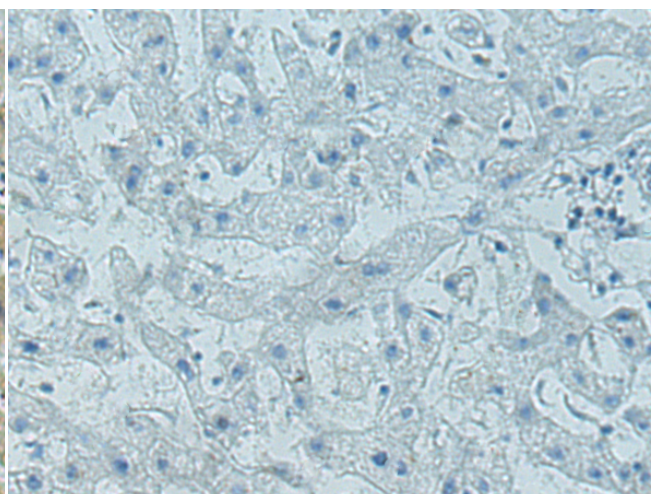
成分: PBS (without Mg²⁺ and Ca²⁺), pH 7.4, 150 mM NaCl, 0.05% Sodium Azide and 40% glycerol

研究领域: Cancer, Cardiovascular, Immunology, Stem Cells

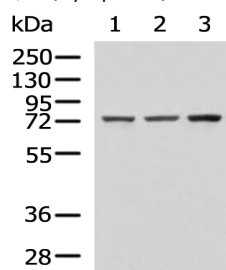
储存和运输: Store at -20°C. Avoid repeated freezing and thawing



Immunohistochemistry analysis of paraffin embedded Human liver cancer tissue using 217249(ENG Antibody) at a dilution of 1/80(Cytoplasm).



In comparison with the IHC on the left, the same paraffin-embedded Human liver cancer tissue is first treated with the fusion protein and then with 217249(Anti-ENG Antibody) at dilution 1/80.



Gel: 8%SDS-PAGE, Lysate: 40 µg;

Lane 1-3: HepG2, Jurkat and MCF-7 cell lysates;

Primary antibody: 217249(ENG Antibody) at dilution 1/650;

Secondary antibody: HRP-conjugated Goat anti rabbit IgG at 1/5000 dilution;

Exposure time: 1 minute