

## ENDOTHELIN 1 RABBIT PAB

货号: N225172

产品全名: Endothelin 1 兔多抗

基因符号 EDN1; Endothelin-1; Preproendothelin-1; PPET1

**UNIPROT ID:** P05305

**背景:** The protein encoded by this gene is proteolytically processed to release a secreted peptide termed endothelin 1. This peptide is a potent vasoconstrictor and is produced by vascular endothelial cells. Endothelin 1 also can affect the central nervous system. Two transcript variants encoding different isoforms have been found for this gene.

**抗原:** The antiserum was produced against synthesized peptide derived from the Internal region of human EDN1. AA range:131-180

**经过测试的应用:** WB,IHC-P,ELISA

**推荐稀释比:** WB: 1/500-1/1000 IHC: 1/50-1/100 ELISA: 1/10000

**种属反应性:** Rabbit

**克隆性:** Rabbit Polyclonal

**分子量:** Calculated MW: 24 kDa; Observed MW: 24 kDa

**亚型:** IgG

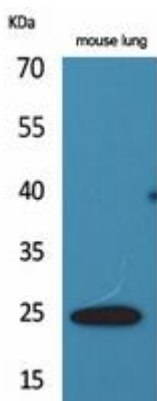
**纯化:** Affinity Purified

**种属反应性:** Human

**成分:** PBS (without Mg<sup>2+</sup> and Ca<sup>2+</sup>), pH 7.3 containing 50% glycerol, 0.5% BSA and 0.02% sodium azide

**研究领域:** Signal Transduction

**储存和运输:** Store at -20°C. Avoid repeated freezing and thawing



Western blot analysis of Endothelin 1 in mouse lung lysates using Endothelin 1 antibody.



# Product Description

Pioneering GTPase and Oncogene Product Development since 2010

---