

EN1 RABBIT MAB

货号: N262178

产品全名: EN1 兔单克隆抗体

基因符号 EN1; Engrailed 1; Engrailed; Hu-En-1; Mo-en.1

UNIPROT ID: Q05925

背景: Belongs to the engrailed homeobox family.

抗原: A synthetic peptide of human EN1/Engrailed 1

经过测试的应用: WB,IP

推荐稀释比: WB: 1/500-1/1000 IP: 1/20

种属反应性: Rabbit

克隆性: Rabbit Monoclonal

克隆编号: R02-8D2

分子量: Calculated MW: 40 kDa; Observed MW: 50 kDa

亚型: IgG

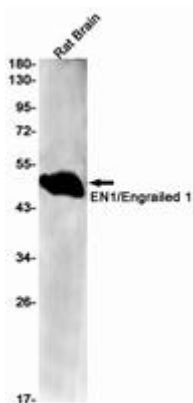
纯化: Affinity Purified

种属反应性: Rat

成分: PBS (without Mg²⁺ and Ca²⁺), pH 7.3 containing 50% glycerol, 0.5% BSA and 0.02% sodium azide

研究领域: Neuroscience

储存和运输: Store at -20°C. Avoid repeated freezing and thawing



Western blot analysis of EN1/Engrailed 1 in rat Brain lysates using EN1 antibody.