

EMSY RABBIT PAB

货号: S221949

产品全名: EMSY 兔多抗

基因符号: GL002; C11orf30

UNIPROT ID: Q7Z589 (Gene Accession - NP_064578)

背景: Regulator which is able to repress transcription, possibly via its interaction with a multiprotein chromatin remodeling complex that modifies the chromatin. Its interaction with BRCA2 suggests that it may play a central role in the DNA repair function of BRCA2. As part of a histone H3-specific methyltransferase complex may mediate ligand-dependent transcriptional activation by nuclear hormone receptors.

抗原: Synthetic peptide of human EMSY

经过测试的应用: ELISA, IHC

推荐稀释比: IHC: 25-100; ELISA: 5000-10000

种属反应性: Rabbit

克隆性: Rabbit Polyclonal

亚型: Immunogen-specific rabbit IgG

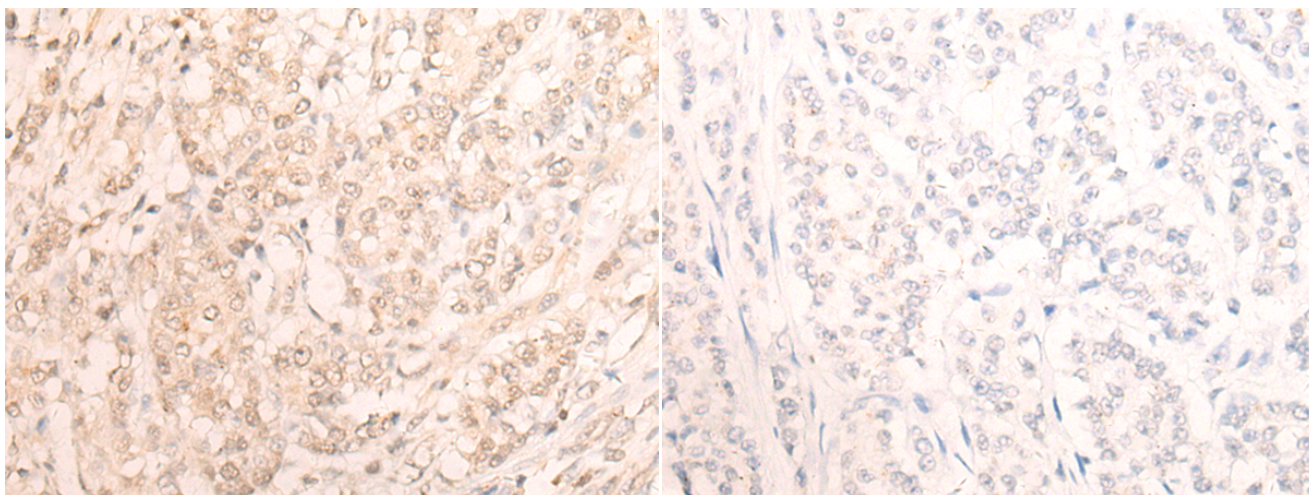
纯化: Antigen affinity purification

种属反应性: Human, Mouse

成分: PBS (without Mg²⁺ and Ca²⁺), pH 7.4, 150 mM NaCl, 0.05% Sodium Azide and 40% glycerol

研究领域: Epigenetics and Nuclear Signaling

储存和运输: Store at -20°C. Avoid repeated freezing and thawing



Immunohistochemistry analysis of paraffin embedded Human colorectal cancer tissue using 221949(EMSY Antibody) at a dilution of 1/20(Nucleus).

In comparison with the IHC on the left, the same paraffin-embedded Human colorectal cancer tissue is first treated with the synthetic peptide and then with 221949(Anti-EMSY Antibody) at dilution 1/20.