

EMP1 RABBIT PAB

货号: S215179

产品全名: EMP1 兔多抗

基因符号: TMP; CL-20; EMP-1

UNIPROT ID: P54849 (Gene Accession - NP_001414)

背景: Involved in bleb assembly and cell death. Located in plasma membrane.

抗原: Synthetic peptide of human EMP1

经过测试的应用: ELISA, IHC

推荐稀释比: IHC: 50-200; ELISA: 5000-10000

种属反应性: Rabbit

克隆性: Rabbit Polyclonal

亚型: Immunogen-specific rabbit IgG

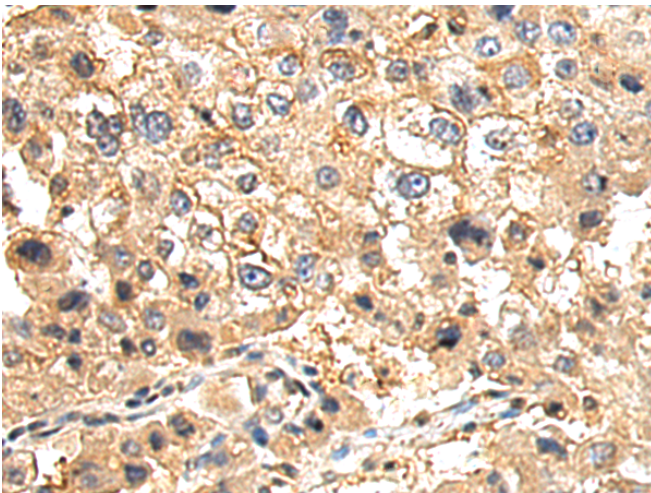
纯化: Antigen affinity purification

种属反应性: Human

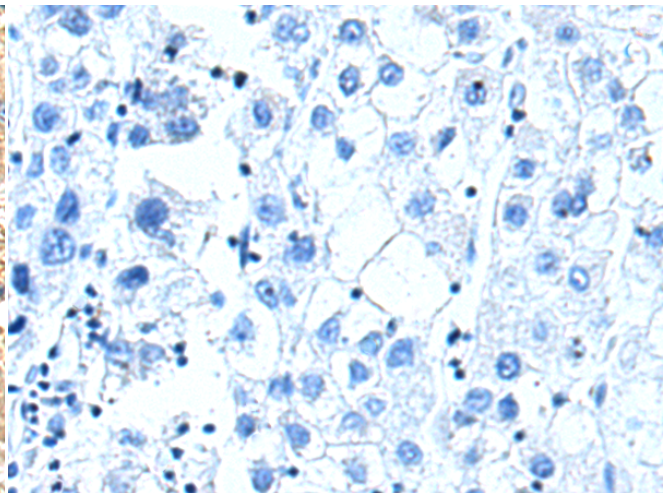
成分: PBS (without Mg²⁺ and Ca²⁺), pH 7.4, 150 mM NaCl, 0.05% Sodium Azide and 40% glycerol

研究领域: Cancer

储存和运输: Store at -20°C. Avoid repeated freezing and thawing



Immunohistochemistry analysis of paraffin embedded Human liver cancer tissue using 215179 (EMP1 Antibody) at a dilution of 1/50 (Cytoplasm and Cell membrane).



In comparison with the IHC on the left, the same paraffin-embedded Human liver cancer tissue is first treated with the synthetic peptide and then with 215179 (Anti-EMP1 Antibody) at dilution 1/50.